



Evington Echo

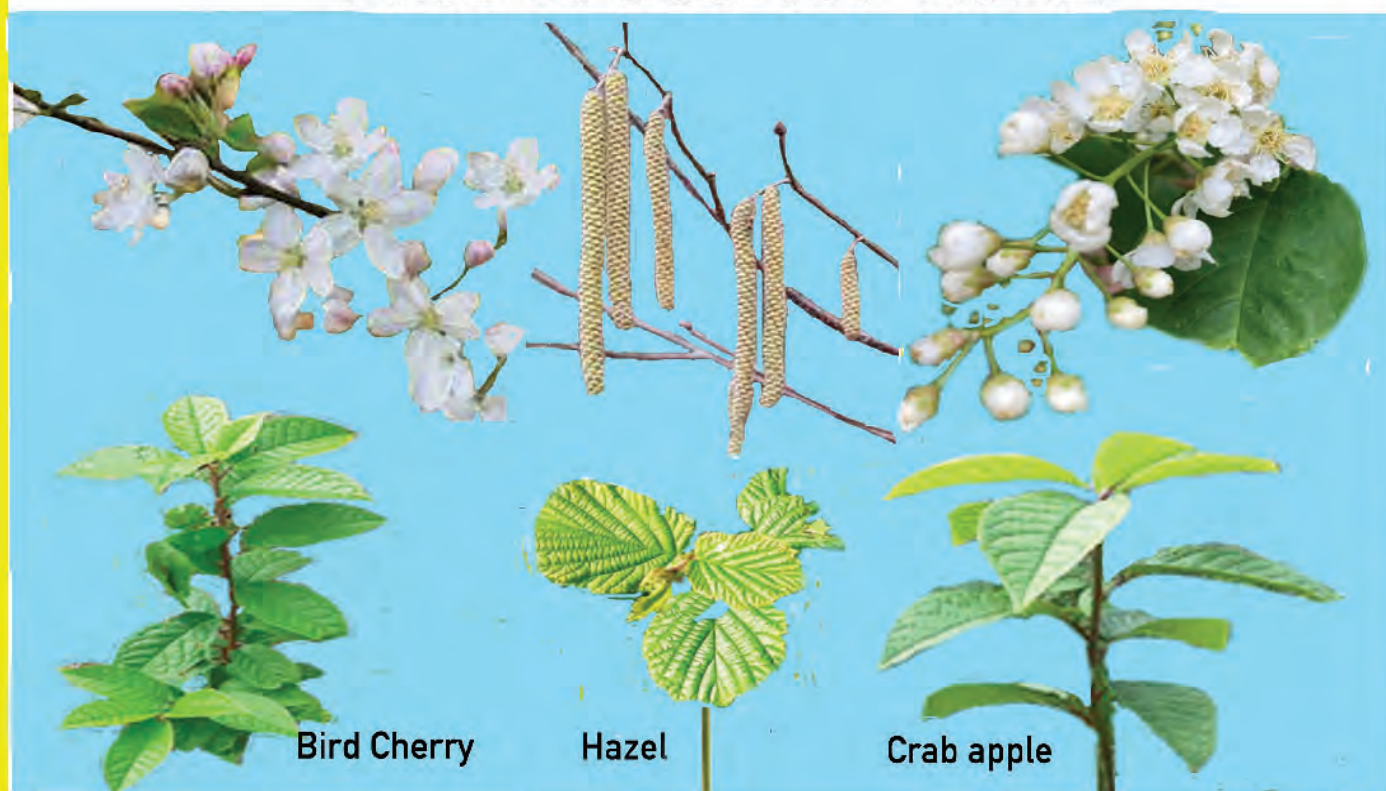
Keeping you up to date with Evington news
Issue 296

FriendsofEvington.com
EvingtonEcho.uk

June and July 2022 Circulation 5,900

TREES - THE LUNGS OF OUR EARTH

222 Trees for 2022



All 240 trees ordered by Friends of Evington for this target have been planted in Evington gardens. These trees will already be in leaf and absorbing carbon dioxide from the air. In time they will provide shelter for birds and food for beneficial insects.

Information about Evington Nature Reserve and details of how to care for your trees and devote more space in your garden to wildlife can be found on www.littlegreenshoots.uk



The Friends of Evington Elected Trustees

Paul Archdeacon (Chair), Helen Pettman (Secretary), Nilesh Chauhan (Treasurer), Jason Chauhan (Vice Chair), Jeff Henry and Suzanne Henry.

www.friendsofevington.com

The Echo Team

Editor Helen Pettman
evingtonecho@gmail.com
 Tel: 2204525 or 07910431044.
www.evingtonecho.co.uk

Assistant Editor Harkesh Farma

Graphics Jason Chauhan

Safeguarding Paul Archdeacon

Distribution
 Chris Hossack 2415153
 Harry Pettman 2204525
 Ben Sherriff 2739709
 Terry Owen 07478766191
 Howard Edmunds 07800602751

Proof Readers Julia Hughes and Addy Tyler

WEBSITE: www.evingtonecho.co.uk
 E-MAIL: evingtonecho@gmail.com
 FACEBOOK: evington echo
 TWITTER: evington_echo

Edition 2022	Deadline	Published
Aug/Sept. 22	15th July 22	5th August 22
Oct./Nov. 22	16th Sept.22	6th Oct. 22
Dec./Jan. 23	11th Nov. 22	1st Dec. 22

The next issue of the Evington Echo will be covering Evington's Jubilee events. Besides the diary information in this magazine, the Evington Echo's on-line calendar at www.evingtonecho.co.uk welcomes information about forthcoming local events. Please email details to evingtonecho@gmail.com



- REWIRES
- SMOKE ALARMS
- CONSUMER UNIT CHANGES
- ADDITIONS & ALTERATIONS
- LIGHTING & SOCKET INSTALLATION
- ELECTRICAL INSTALLATION CONDITION REPORTS(IEICR)
- ELECTRICAL TESTING AND CERTIFICATION

Reliable service guaranteed
 Free estimates & advice
 Domestic and commercial
 No job too small

Tel: 07855096419
 Email: J.PELECTRICAL@HOTMAIL.COM
 Contact Pravin for a free quotation

PLUMBING

Friendly, Reliable & Service

HEATING

- Registered Plumber
- No Job Too Small
- OAP Discounts

Call(anytime): Mr Driver
TEL: 0116 2713334
MOBILE: 07773514619

LEV, IN BLOOM AND IT'S YOUR NEIGHBOURHOOD!

By Paul Archdeacon

These schemes were mostly suspended during lockdown, but since April 2022 planning has been up and running with renewed vigour. Well organised partnerships between Leicester Environmental Volunteers (LEV), Park Services staff and environmental rangers, Bloom and It's Your Neighbourhood groups are developing together to make a positive difference to our environment.

Leicester Environmental volunteers (LEV) offers people the chance to take part in conservation, habitat and environmental improvement projects on the city's parks, riverside and green spaces.

In addition to environmental, conservation and gardening opportunities, volunteers can also get involved in construction projects, building small bridges, repairing riverbanks, installing steps and creating new homes for wildlife.

Activities are supported by trained park staff and environmental rangers and regular outdoor volunteering sessions are available on land and water throughout Leicester, all year round, in all seasons and weathers.

To find out more, or to sign up to become an environmental volunteer, visit www.leicester.gov.uk/parks-volunteers

Also a new LEV session is taking place on Wednesday afternoons (1.00pm to 2.30pm) in the Burnaby Gardens in Evington Park. You must be a member of LEV to join these sessions led by Sarah Ingram, Park Gardener.

The Evington in Bloom scheme is a competition which invites judges from the Royal Horticultural Society and East Midlands in Bloom to come and evaluate some projects in the Evington area. The judging will take place on a day in the first fortnight of July. Projects that can't be seen on the judges' walk are highlighted in the Evington in Bloom portfolio for 2022.

The competition is about everything to do with building community, taking environmental responsibility and gardening for enjoyment and biodiversity.

This year Evington in Bloom will also enter two schools – Judgemeadow Community College and Mayflower

Primary School in the best school garden competition and enter the Cedars in the best pub competition. Also a new category is the best Spring bulb competition. Evington in Bloom won this competition in the East Midlands last year.

It's Your Neighbourhood groups are monitored by the LEV team and also support the Evington in Bloom competition. They can be led by volunteer leaders on private land or on Council land. Leaders on Council land can either maintain an existing area or develop new plans, in partnership with park staff. They can find their own volunteers, but there is a registration procedure, similar to the one LEV uses to register volunteers.

In Evington, the new project, financially supported by Evington in Bloom, LEV and Parks Development Services is a plan to enhance the land at Sedgebrook Open Space. The leader is Jeff Henry and you will find more information about this very soon.

The closing date for registering It's Your Neighbourhood groups is the end of May. Last year, despite Covid restrictions, 8 IYN groups were registered in Evington and obtained some very good results.

Evington in Bloom would also like to thank the litter pickers who regularly go out and keep areas looking clean. People are more likely to complain if an area is litter strewn than praise an area that is kept free of litter, so the dedication of litter pickers often goes unnoticed, but they do a wonderful job.

If you would like to see the marking criteria for Evington in Bloom and It's Your Neighbourhood, please go to www.emib.org.uk. IYNs get a judge that visits separately in July or August. Also the two Evington in Bloom nominated schools are judged separately, but the judges will visit the Best Front Garden entry and the Best Pub entry during their Evington in Bloom visit in July.

Once LEV and Evington in Bloom know what the IYN groups will be in Evington, then there are more opportunities for volunteers to get involved in these bespoke projects and help make Evington look good both for people and pollinators. Friends of Evington is the charity that supports Evington in Bloom, and would like to thank the Community Lottery (Awards for All) for a grant of £10,000 which has helped develop projects.

A. K. DAVIS

All building work, carpentry and joinery undertaken

30 years experience

High quality workmanship

Very reliable

28 Leicester Road, Billesdon, Leics. LE79AQ
 Tel: 0116 2599692
 Mob: 07711768078

KS CLEANING SERVICE

Professional Service with a smile

OFFICE & HOME CLEANING

Daily, Weekly, Biweekly, One off cleaning

DBS Checked and Insured
 Same cleaner every time
 Bed change, Ironing and more

Please give me a call and I will be happy to help!

Kerrie - 07835 303 924
k.s.cleaning@hotmail.com

ART EXHIBITION BY LOCAL ARTIST

Due to popular demand, Jay has organised another Art Exhibition to be held on SATURDAY 23 July 2022, between 11.00 AM and 17.00 PM, in the REAR garden at 24 Tavistock Drive. Evington Leicester, LE5 5NT.

All proceeds from the donations/ sales will go to MYELOMA cancer research (Blood cancer) and Haematology Department at Leicester Royal Infirmary.

For further info please call Jay on 07921 093112.



- 1/ My Kilimanjaro
- 2/ Galloping Horse.
- 3/ Moon light (in black and white)

Hair by Jill

**JILL PODGERS
MOBILE HAIRDRESSER
WITH 30 YEARS EXPERIENCE**

OAP DISCOUNTS

FOR QUESTIONS AND PRICES PLEASE CONTACT ME ON:
MOBILE: 07565461492
HOME: 0116 2927340

Please support local businesses

AGE UK – THE REUSE SHOP PROJECT



Leicester Shire & Rutland has turned 70 years old (the year of the Queen's Platinum Jubilee). They are a local independent charity with a national name. They are the largest charity that helps to support local older people.

They have a new project between Age UK Leicester Shire & Rutland and Leicester City Council at the Gypsum Close Recycling Centre at 5 Gypsum Lane, Leicester LE4 9AB. The opening hours are from Monday to Friday from 9.00am to 6.00pm and weekends from 8.30am to 6.00pm.

The Re use Shop has now been refurbished and offers an expanded shop floor and a new workshop, as well as areas for receiving and sorting donations.

As part of its investment in the site, Leicester City Council has also created 10 parking spaces, making it easy for people to drop off items in good condition for re-sale or to pop in to browse.

Local resident, Mushtaq Patas volunteers at this site and he helps with sorting through the donations and highlighting the benefits of recycling. He is also good at making cups of tea.

He says, "Giving up my time to volunteer has been helpful. It's a great way to learn new skills, make contacts and get a foot in the door of the third sector. Volunteering is a great way to improve your chances of finding a job."



THE REUSE SHOP
Even bigger, even better!

BENNETT'S
HARDWARE • GARDEN SUPPLIES • DIY

OPEN MONDAY-FRIDAY 8.30-5.30 SATURDAY 8.30-5.00

**LARGE RANGE OF
WILD BIRD FOOD
AT LOW PRICES**

WIDE CHOICE OF QUALITY FEEDERS

30 Main Street Evington Village
OPPOSITE THE CEDARS PUB Tel: 273 7116

CAMPAIGN SUCCESS FOR NEW BUS SHELTERS IN EVINGTON VILLAGE

Two new bus shelters have been installed along Main Street, Evington this Spring. The pictures below show residents enjoying these new facilities.



New bus shelter by the J & A Pharmacy arcade of shops on Main Street



New bus shelter near the Cordery Road turning on Main Street

A local resident said:

"We really, really do appreciate having this shelter back. It is a very drafty corner and if you are waiting for a bus, particularly if it is raining, this has made a real difference to us."

The campaign for new bus shelters in Evington was led by Zuffar Haq.

EVINGTON COMPUTERS

Nicholas Gallo

PC HARDWARE & SOFTWARE SOLUTIONS
REPAIRS, UPGRADES - HALPS
INTERNET CONNECTIONS/NETWORKING
SUPPORT SERVICES
FREE CONSULTATIONS

PHONE: 2201661
07920 790671

32 MARYDENE DRIVE
EVINGTON, LEICESTER

E-MAIL: NICKGALLO@HOTMAIL.COM

Microsoft Professional

LETTERS

'LEGITIMATE STREET PEOPLE' AND FAKE BEGGARS.

Dear Editor,

I was interested to read Ian Morton's letter in the April/May edition of the Echo where he draws a distinction between the 'genuinely homeless' therefore, presumably, 'legitimate street people' and 'fake' beggars.

Unfortunately there's a myth I hear all too often that many beggars are professionals with nice homes, large families, etc..

I'd like to know how he can tell the difference. More information please, Mr Morton.

Regards,
Mick Holland
Marydene Drive.

BEGGING ON OUR STREETS

Dear Editor,

In reply to Ian Morton's letter about 'Begging on our Streets' in the April/May issue, no. 295, I write to say that two beggars I saw outside Tesco's on Ethel Road do have homes to go to and are 'fake' because they probably want money for alcohol. This is a different problem to genuine homelessness. Name and address supplied.

HOMELESS IN EVINGTON

I met him on my way to the shops in Evington one morning in early April '22.

Like most people, I don't usually give cash to homeless people, but I did stop to

talk and listen. This man, 'Ken', was in his thirties and was sitting on the pavement in a small gap against the wall and by an Evington in Bloom flower container. He was homeless. He said "It all started with the death of my mother. I then suffered with mental health difficulties and a relationship breakdown with my partner."

He said he understood why men between 20 and 40 who found themselves homeless were not priority with the Council, but he had hoped for better support. In two years he wasn't able to move forward with his mental health issues while coping with living on the streets.

The day I met him he said that the Council had found him a home nearby and he would move in the following day. He came to Evington to get away from the streets in Leicester where he felt vulnerable. He wanted to spend his last day on the streets in a pleasanter area and hoped to get enough money to travel back to Leicester and get possession of his new flat the following day.

Helen Pettman (Full article at www.evingtonecho.uk)

IF YOU ARE STRUGGLING WITH MONEY

Please talk to your social worker, child's school, local housing officers or income management officers, who can make referrals.

You can find more information on the household support fund and other support from Leicester City Council at www.leicester.gov.uk/benefits.

If you aren't on the internet, ask at your local library.

FASTER BROADBAND

Many streets in Evington have been dug up for fibre optics. This picture shows cables going in along High Street, Evington. This is to bring faster broadband.



PLANS FOR A £37 MILLION ELECTIVE CARE HUB AT THE GENERAL HOSPITAL

A £37million elective care hub is to be built at Leicester General Hospital in the next year.

The news was revealed by Richard Mitchell, chief executive of Leicester's hospitals, in an interview with Zuffar Haq on Ramadan Radio.

The centre will treat thousands of patients a year needing operations such as hip replacements. This new facility will be central to separating emergency care from more routine care, helping to cut waiting times.

Richard said the hub will be built with 'new' money and he also added that no land on the site has recently been sold.

Zuffar said, "This is great news for Leicester and Leicestershire. I am delighted that Richard is pushing ahead with plans for 21st century health care in our city."

Guiding you through those difficult legal life-changing times.

Gerard James is a family-owned Estate Planning practice committed to providing you with a friendly, efficient and yet affordable, professional service.



- Wills
- Trusts
- Lasting Powers of Attorney
- Funeral Plans
- Probate Administration

www.gerardjamesestateplanning.co.uk

Please contact
Gerard O' Halloran today
07905 748073

g gerardjames
Estate Planning Limited

Gerard James Estate Planning Ltd
working in association with Countrywide
Tax and Trust Corporation Ltd



*"We preach not ourselves,
but Christ Jesus the Lord"*

EVINGTON CHAPEL

(Baptist)

Welcome to our meetings

Sunday : 11am and 6pm

Wednesday : 7.30pm

Other meetings as announced

www.evingtonchapel.org.uk

For further information contact: 0116 2412087

R. GLENTON & SON PHARMACY

PRESCRIPTION ORDER AND COLLECTION SERVICE

DELIVERY OF MEDICATION IF REQUIRED

OPENING HOURS:

MON - FRI 9AM-1PM & 2PM-6PM

SATURDAY 9AM-1PM

DISABILITY AIDS ARE STOCKED AND NEXT DAY AVAILABILITY

STOP SMOKING SCHEME

WIDE RANGE OF DRESSINGS STOCKED

KNITTING WOOL, PATTERNS AND HABERDASHERY

WIDE RANGE OF TOILETRIES AND HAIR COLOURS

49 WELLAND VALE ROAD, EVINGTON,

LEICESTER, LE5 6PX

TEL: 0116 241 5633

THE LORD MAYOR WOWS CHILDREN AT HAF CAMP AT EVINGTON YOUTH CLUB



"I was so excited and thrilled to meet the Lord Mayor of Leicester. I was happy that we made pizzas together and he called us experts as we were instructing him on how to make a pizza. I also got to see his car with a small flag on it". This was how Hasnain Shaikh told his family about the Lord Mayor's visit to Evington Youth Club on Thursday 14th April. The children were making their own pizzas for their lunch and the Lord Mayor joined in with gusto, asking for their advice at every stage. They had huge fun together.

The Lord Mayor was visiting Evington Youth Club partly to see the Easter holiday activities provided by the Council's HAF (Holiday, Activity and Food) programme but mainly to say a formal thank you to Wickes of Thurmaston for their amazing donation to the club of a brand new kitchen without which the whole programme (and the pizza making) could not have taken place. Russell Smith, the Manager of Wickes, Thurmaston, was enthusiastic in his support for the project as part of the new Wickes Community Programme and was delighted to be there to accept the Lord Mayor's thanks on behalf of Wickes.



The HAF programme is being run by the City Council to provide activities and meals for children during the Easter holidays. Richard Moore Sports CIC was responsible for organising the event at Evington Youth Club and the children who took part clearly had a lot of fun. They are now hoping for more events like these in future holidays.
Liz Warren

WHAT IS COMMUNITY REPORTING?

Eight Friends of Evington members met with Rob Watson from Decentered Media to learn more about community reporting and ways of listening to and reporting the voices of the local people.

"Discussion groups are great," Rob said, "but you need to do something with it!"

With Rob's help, Friends of Evington/Evington Echo set up a new website at www.evingtonecho.uk which makes the authorship of articles much clearer, enabling the website and magazine to get the IMPRESS seal of approval. Rob explained the importance of story making based on evidence.

See the website at <https://leicesterstories.uk>





**TRUSTED BEREAVEMENT CARE
FROM OUR FAMILY TO YOURS**

A.J. Adkinson & Son

**FAMILY-OWNED INDEPENDENT
FUNERAL DIRECTORS**

Serving our community for over 100 years, with compassionate and professional bereavement care, uniquely tailored to your needs. Specialist faith facilities, on-site parking and catering suite.

12 London Road, Oadby
Leicester, LE2 5DG

 **24 hour service
0116 271 2340**

Email: funerals@ajadkinsonandson.com
www.ajadkinsonandson.com

EVINGTON EYECARE

Serving the local community for 30 years

We offer a range of specialist services provided by our highly experienced and qualified team:

- Advanced spectacle lens designs
- Multifocal, daily disposable and specialist contact lenses
- Optomap widefield retinal screening
- Dry eye management

Contact us for further information
45a Downing Drive, Evington Leicester LE5 6LL
info@evingtoneyecare.co.uk
www.evingtoneyecare.co.uk





Carpentry & Joinery By **L.J.W.**
Over 20 years experience

**City & Guilds
Qualified**

- Kitchens Supplied and fitted
- Solid Wood Flooring
- Laminate Flooring
- Skirting
- Architraves
- Locks
- Doors
- Garage Doors
- Decking
- Sheds
- Gates
- And more

For a **FREE** Quotation Please Contact Lee on:

 **0116 273 6625**  **0789 148 4088**
ljwcarpenter@live.co.uk

WHERE HAVE ALL OUR HEDGEHOGS GONE?



It is a sad fact that hedgehogs are facing a massive decline in Britain. It is estimated that in rural areas, populations have recently halved; urban ones are not faring much better.

You may have seen, in the Echo this time last year, pictures of as many as THREE hedgehogs together enjoying their nightly feed in my back garden, captured by Jon's 'hedgehog-cam'. This year – where have they all gone? As yet, we have not seen a single one!

Urban hedgehogs roam a significant distance each night; they need to patrol the size of at least twelve gardens to source enough slugs to keep them fed.

(There are certainly plenty of particularly fat slugs in our garden – I look out at the food bowl generally teeming with the not-so-little blighters feasting on the cat food intended for our prickly friends! Also enjoyed by our local fox and the neighbours' cats!)

Unfortunately, I feel that, over

lockdown, there has been much more household maintenance; previous gaps in fences have been repaired and the hedgehogs cannot get from garden to garden. We have little 'hedgehog gaps' cut into the bottom of our fences to enable them to get through, but believe a blockage further up Thurnview / Ingarsby Road mean they cannot get down to us.

Hedgehogs are fast becoming an endangered species, but we can all try to do our bit to help.

Please negotiate with your neighbours and create little passageways for them – all they need is a little hole cutting in the gravel board or bottom of a fence panel through to next door – just a 6"/ 15cm square will suffice – about the size of a tall, cube-shaped tissue box. Nothing massive. (It won't encourage more cats – they can jump over the fence. Hedgehogs can't.)

If enough of these holes can link adjacent gardens it would give them a much bigger area to hunt each night – and hopefully reduce your slug problem too!

We were amazed, one night, to witness one enthusiastically rolling a fat slug on the paving slabs to get the slime off before wolfing it down!

Supplement their diet with some small-bite puppy or cat food – meat based, not fish. Definitely NO milk – it will kill them!

Please watch out for them when mowing the lawn and definitely when strimming! We loved watching them come to visit; they are fascinating creatures! Please try to help them travel between the gardens – it would be lovely to get their local population to thrive again. Thank you.
Addy & Jon Tyler

OLD OAK TREE ON EVINGTON VILLAGE GREEN



This old oak tree is a landmark on Evington Village Green, formerly called 'the Recreation Ground' and before 1913 part of the very large Stoughton estate.

In 1913, the Village Green was bought at auction by the philanthropist, John Edward Faire, and given to the people of Evington.

Later the War Memorial was erected in the middle of this site and then moved to its current position on the corner of Church Road and Main Street.

In 2014, the War Memorial site was revamped and in 2021 the display of early Spring flowers at the War Memorial won the 'Best Spring Bulb' display in the East Midlands in Bloom competition.



ipom
INTRUDER PEACE OF MIND

FREE 24 hour callouts for contract customers

Complete Intruder Alarm Home Security Systems

Installation & Maintenance

20 years experience

Contact Jaimie Meredith on:
Tel: 07305 523492
 Email: jaimiemeredith@googlemail.com
 8 Hereford Road, Aylestone, Leicester, LE2 8HG

38 - 40 Main Street
Nisalocal
Evington Village

Opening Times Mon - Sat 6am - 10pm and Sun 7am - 10pm **0116 273 8616**



snappy shopper
a convenience store at your door

Search Snappy Shopper on the app. store. Browse groceries, etc. Order and delivery to your door in 30 - 60 minutes.

GET IT ON Google Play | DOWNLOAD IT ON the App Store



HAMBLETON BAKERY

Serving Evington Village with fresh products

Proud to support local businesses and keeping things local, we have daily deliveries from Hambleton Bakery. Various sweet and savoury bread, cobs with many lines of savoury and sweet delights to tempt. Orders taken for collection in store. All fresh and cooked meats, pies, faggots and sausage rolls from Leicester's most prestigious butcher, Joseph Morris.

Our fantastic beer and wine range at promotion prices. Vapes from £2.50, tobacco, confectionery and groceries. National Lottery. Hermes. Payzone. Costa coffee. Rollover hot dogs. FWIP Icecream. Freal milkshakes.

We support the community by connecting people to local support and information. We are a distribution hub for the Evington Echo.

Free home deliveries in local area. Orders over £15



MARY ELIZABETH POWELL
15 JUNE 1926 — 26 FEB. 2022



Mary's parents were Hilda and Harri, and she was born in Briton Street, Leicester. At the age of seven, she moved to Kissingbury near Northampton and subsequently the twenty miles to Irthlingborough, where her father became Secretary of the shoe manufacturers, John Shortland Ltd.

Her education took place at Wellingborough School for Girls after which she became a student for three years at Leicester Domestic Science College. Once qualified, her first teaching post was at Glass Street Girls School, Stoke on Trent, for six years to 1953.

Her first appointment in Leicester was in 1954 when she taught domestic science at Crown Hills Secondary Modern School. This was followed by teaching assignments at Sir Jonathan North and Rushey Mead. In whichever school she taught, she was always dedicated, caring and very well organised. Her final post was at Spencefield Secondary Modern School where she was appointed as Head of the Domestic Science Department and,

subsequently, as Assistant Headteacher.

After her father died, she and her mother moved to Spencefield Lane where she lived for many years. Her family life was interwoven with cousin Jean and her husband Ted and this closeness continued with their sons, Andrew and Nick. She shared a lot of time with them and their families when they travelled to Evington from either Durham or Milton Keynes.

Auntie Mary, as she was known by her many friends and relatives, was very interested in family history to the extent that she discovered some of her Canadian relatives in Vancouver. Since then, every Sunday evening included a lengthy Skype conversation.

As part of her research, she not only discovered her father's WW1 diary, but also produced a short book covering the variety of events that he experienced.

After retirement, she had piano lessons from Margaret Moss and was so successful that she too became a piano teacher, having reached Grade 8. Knowing Mary, and as might be expected, many of her pupils went on to achieve the highest of grades.

From her early teaching years to her retirement and beyond, Mary made many friends and spent time visiting them in different parts of the country, including Devon, Staffordshire, and Norfolk. Whilst there, she took lots of photographs and produced many paintings. Her interest and ability in art led to membership of the Crown Hills Art Society and Art in the Park. She contributed to a collective painting that hangs in the Parish Centre at St Denys Church, Evington.

Her high-tech skills were legendary and, as recently as 2020 she designed, published, and sold a calendar of her pen

and ink sketches of local scenes in Evington.

In addition to all her various activities, her public spiritedness was shown in voluntary work at the Leicester Museum for many years, plus the role of Governor of Scraftoft Valley Primary School, where one of her previous students became Head Teacher.

Her final twenty-one years were spent at Birkdale Court on Evington Lane, where for over five years, she was a Director of Evington Lane Management Co Ltd.

Mary had so many friends, relatives, and former pupils in Evington, in this country and overseas. She was unique and she will be sadly missed.

Nick and Andy Freer, relatives. Ann Dixon, close friend. Mike Howitt, neighbour.

**THE LIFE AND TIMES OF
MARY ATTENBOROUGH (1896 –
1961) BY RICHARD GRAVES
(ISBN 9781914471148)**

Richard Graves was the speaker at the History and Heritage group meeting in April. He spoke about Mary Attenborough and made a plea for the public recognition of her philanthropic work. "Leicester prides itself on its diversity and continuing role of welcoming refugees from desperate situations all over the world. The University is celebrating the centenary of its foundation with an emphasis on the unsung role of women in its early history. Surely now is an appropriate time for both the City and the University of Leicester to acknowledge the wonderful humanitarian work which Mary undertook in the City between 1937 and 1946?"

More information about this talk is at www.evingtonecho.uk

Clinical Hypnotherapist & Mindset Coach

Mental Wellbeing Services

Specialising in:

- Anxiety
- Stress
- Bereavement

LOCAL PRACTICE

GET IN TOUCH TODAY

Sadaf Akhtar
Resonate Success

0786 9720043
sadaf@resonatesuccess.co.uk
www.resonatesuccess.co.uk

bpec APPROVED

Robert Johns
Plumbing & Heating Services

For all Your Plumbing & Heating Requirements

A fully qualified and Gas Safe Registered tradesman. Experienced in both domestic & commercial work.

Full Central Heating Systems	Ground Source Heat Pumps	Bathroom & Showers
Boiler & Radiator Changes	System Power Flush	Alterations
10yr Guarantee, Parts & Labour on selected Boilers	Boiler & Gas Fire Services	Outside Taps
	Gas Landlord Certificates	Solar Hot Water Systems

For a free estimate call **0116 241 8758**
www.robertjohnsplumbingandheating.co.uk robert@rjph.co.uk
81 Pulford Drive, Thurnby, Leicester

ALLSIDES
GUTTERING REPAIRS
REPAIR ■ CLEAN ■ REPLACE
SLIPPED TILES/SLATES
CALL STEVEN:
0116 2161 777 / 07970 032814
e: fcf2211@gmail.com
SEE OUR 5★ GOOGLE REVIEWS
www.allsidesguttering.co.uk

Mike Owen Carpentry
Est. 1998

Skilled, reliable craftsman
with over 20 years experience

All wood projects considered,
including custom designed garden rooms

No job too big or too small

Call: 0777 0980079 / 0116 241 6938
(Evenings)
Email: mikeowencarpentry@gmail.com

POSTBOXES AND A HISTORICAL PILLAR BOX

Readers, I should start off with a sort of disclaimer. I am very much at the start of my voyage of discovery as an amateur local historian and one thing I have learned about while researching is the limits of my knowledge. Having said this, I gladly share my discoveries with Echo readers in this first article in our new history and heritage series.

A note on nomenclature: 'Letter box' and 'post box' are generic names but the term 'pillar box' was originally used for freestanding column-style boxes. The term 'mailbox' was a later Americanism and not much used in Britain until the 20th Century.



There is a vast range of styles and colours of post boxes, but our focus will be the pillar box for the excellent reason that we, in Evington, have a very fine example of a historical pillar box.



The Evington VR Pillar Box
Constructed 1897 to 1904.

Thank Trollope for the Pillar Box

This plaque commemorates the bicentenary in 2015 of the birth of Anthony Trollope (1815 – 1882) who introduced pillar boxes to the United Kingdom in 1852.

The roadside post box was introduced in Britain following the 1840 Postal Reform Act which provided for universal affordable postage. New adhesive stamps made pre-payment of postage easy. However, letters usually had to be taken to the nearest letter receiving office which could be miles away. This, together with the growth in demand for postal services linked to Victorian industrialisation and urbanisation, led to the need for many more convenient places where stamped letters could be deposited.

Anthony Trollope, a General Post Office (GPO) official, was sent to Jersey to make recommendations and to provide a solution. He adopted a system used on the Continent of placing locked cast-iron pillar boxes at the roadside and the provision of regular collection times. His scheme began in the Channel Islands in 1852 and was extended to the mainland in 1853.



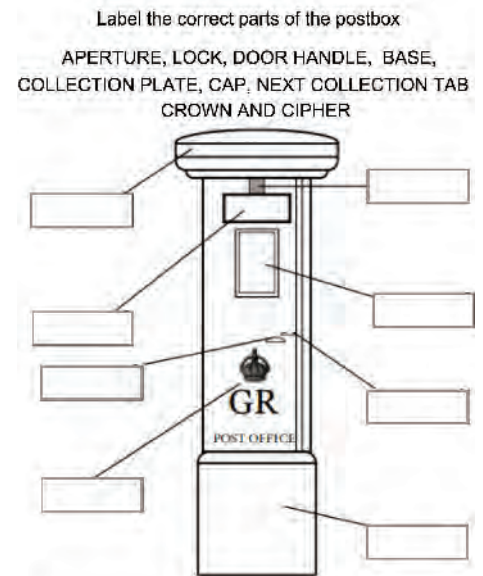
Anthony Trollope (1815-1882)

Not all people liked or trusted the iron stumps. Aunt Stanbury in Trollope's novel *He Knew He Was Right* was extremely distrustful of any modern innovation, pillar boxes included:

"She had not the faintest belief that any letter put into one of them would ever reach its destination. She could not understand why people should not walk with their letters to a respectable post-office instead of chucking them into an iron stump as she called it out in the middle of the street with nobody to look after it. Positive orders had been given that no letter from her house should ever be put into the iron post."

Standardisation of sorts came in 1857 with the deliberations of the Committee for Science & Art of the House of Lords. Without wishing to disrespect their lordships, the English expression "A camel is a horse designed by a committee" is brought to mind when we consider the rather dubious first standardisation attempt by officialdom. The committee designed a very ornate box festooned with Grecian-style decoration but, in a major oversight they forgot the apertures so how could one insert a letter into the box? The blunder meant that the apertures had to be hewn out of the cast iron later thus marring the aesthetic of the box.

The drawback of incorporating too many conflicting and inexperienced opinions into a single national project was illustrated neatly by this inauspicious start to the British postal service. This did not however prevent post boxes becoming a very popular and distinctive part of the



Why not try this labelling activity?

Some features of the Evington VR Pillar Box



Crown and VR entwined cipher



Circular convex cap

POSTBOXES IN EVINGTON BY HARKESH FARMA

of the urban street landscape. A new hue was added to the national palette in the form of pillar box red and the postal boxes became and remain a British cultural icon.

Changes did occur to the box, and into the 20th century new styles were introduced. The pillar box was initially produced in two sizes that are still in use today: Standard Types A and B. The former being larger and wider while the latter are smaller and narrower.

There is a handy layperson's method to quickly determine the Standard type of pillar box.

Approach the post box with an open heart, an open mind and open arms and then embrace it. If you can comfortably put your arms around its girth, it is likely to be a Standard Type B Pillar Box. If you cannot it is a Standard Type A. Of course it will depend on arm length, but this is a general rule. In the next edition of the Evington Echo, there may be puzzled letters from readers about the post box huggers of Evington, but we do it in the name of local heritage.



It's a Standard Type B



Collection plate

Local Heritage Asset Register Leicester City Council

Ref: LL/364



Criteria:

Reason for Designation:

Victoria R Post Box

Adjacent No. 155 Evington Lane

Construction Date:	1897 - 1904
Architect:	Office of Works
Original Use:	Post Box
Current Use:	Post Box
Condition:	Fair
Occupancy:	N/A

Ward:	Evington
NGR:	SK 6172 0300

Historic interest, architectural interest, age & rarity / representativeness

A rare local example of an early 20th Century traditional pillar box of a standard Type B pillar design. The VR cypher commemorates the reign of Queen Victoria (1852 - 1901). The reign was a time of innovation and experimentation in the design of post letter boxes; by the end of the century, the standardised modern wall box and pillar box were developed.

urban street landscape. A new hue was added to the national palette in the form of pillar box red and the postal boxes became and remain a British cultural icon.

Changes did occur to the box, and into the 20th century new styles were introduced. The pillar box was initially produced in two sizes that are still in use today: Standard Types A and B. The former being larger and wider while the latter are smaller and narrower.

There is a handy layperson's method to quickly determine the Standard type of a pillar box.

Approach the post box with an open heart, an open mind and open arms and then embrace it. If you can comfortably put your arms around its girth, it is likely to be a Standard Type B Pillar Box. If you cannot it is a Standard Type A. Of course, it will depend on arm length, but this is a general rule. In the next edition of the Evington Echo, there may be puzzled letters from readers about the post box huggers of Evington, but we do it in the name of local heritage.

The Asset Register

The architect is given as The Office of Works.

The predecessor of The Office of Works dates back to the English royal household in 1378 during the reign of Richard II. It oversaw the building and maintenance of the royal castles and residences. In 1832 it became the Works Department joining forces within the Office of Woods, Forests, Land Revenues, Works, and Buildings. It was reconstituted as a government department in 1851 and became part of the Ministry of Works in 1940.

Three main factors determine the heritage credentials: age, rarity and historic or townscape value. The earliest boxes deserve special protection as do boxes which are either unique or are known to exist in small numbers. Some boxes are historically important because of the significant part played in the development of post box provision. The Postal Museum and The Letter Box Study Group act as consultants to Royal Mail and Historic England on heritage matters. The Postal Museum holds the National Collection of post boxes which covers many types.

The Evington VR Post Box

The Evington VR Post Box is the oldest of the three boxes on the city's heritage assets register and it has been in continuous use since its placement. That it has been protected and used for so long is a source of civic pride. The register gives a date range for its construction rather than a precise year. It was constructed some time during the last 4 years of the reign of Queen Victoria or possibly during the first 3 years of the reign of her son King Edward VII.

This seven-year date range triggered in me a train of thought about what I call the

With thanks to the following for images and information.



THE SLOW TRANSITION

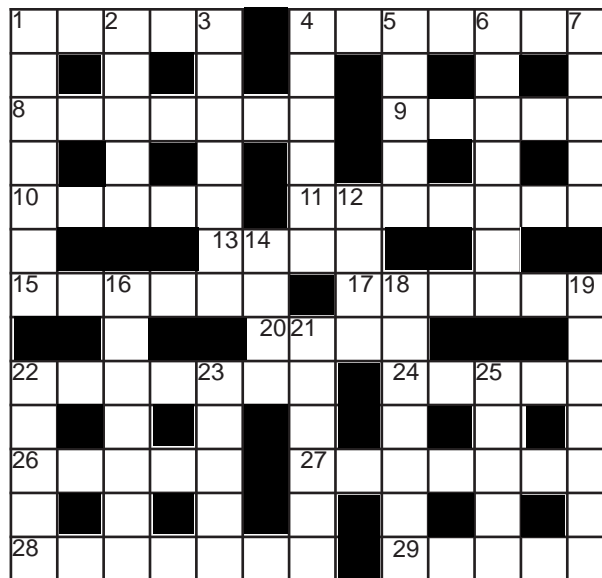
We can see that it's all changing before our eyes but to what extent are we managing the transition effectively and responsibly during this period? It's like an exercise of compare and contrast between the early days of the pandemic, for example, May 2020 and now, at the time of writing, May 2022. Masks are rapidly disappearing; when last did you wear one? Physical distancing, what's that, a distant memory? Lateral flow tests (LFT) have to be purchased now, so many people will not know whether they have or have not got Covid-19.

I talked with someone very recently who said that she was not feeling well. When I queried what she thought might be the cause, she replied that she didn't think that it was Covid because she was sneezing and therefore it was probably a cold.

I commented that when I had tested positive for Covid-19, I thought that I was sneezing and coughing for Britain whilst also maintaining a mucous production factory. I suggested that she did a LFT, I could even give her one. She needed to get from where she was to her home, in a different part of the country, therefore, the logic was that she did not wish to know her Covid status at that point as she had to get the train.

I asked if she was going to wear a mask on the train, her response was negative.

People's behaviour has definitely changed. We are becoming more relaxed but we need to continue being careful as Covid-19 is still



Compiled by R. Tracy Solutions on this page

around and still has the capacity to morph into a different variant, possibly more transmissible and more virulent. Let's be careful!

It has been lovely seeing more people, becoming reacquainted and catching up with their news. I have had to remind myself that my default greeting with most people, although by no means all, was to give them a hug and a kiss. This only happens to those with whom I feel very close. Otherwise, I need to actively remind myself that a hug might be nice. A key difference now is that I check with the individual whether they are willing to accept an embrace and there are no negative feelings towards them if they do not wish to have any physical contact. My behaviour has definitely changed!

In most indoor spaces I will wear a mask, I consciously do a rapid risk assessment to inform my decision. This is what I tell myself but you can be the judge of this!

Please stay safe until we connect again via these Evington Echo pages.
Suzanne Overton-Edwards

ACROSS		
1	LEISURE ACTIVITY	(5)
4	NORMAL	(7)
8	EDIBLE	(7)
9	ENTRAILS	(5)
10	CONCUR	(5)
11	BORDERS	(7)
13	ASSISTANT	(4)
15	ITEM OF SPORTS EQUIPMENT	(6)
17	TOLERATES	(6)
20	FLOWER	(4)
22	BELLY	(7)
24	PLOT	(5)
26	CLIMBING AID	(5)
27	SMATTERING	(7)
28	ABODE	(7)
29	OF THE SUN	(5)

DOWN		
1	USHER	(7)
2	EXTERNAL	(5)
3	SPECTACLE	(7)
4	REQUIRED	(6)
5	STRAP	(5)
6	CLARIFIED	(7)
7	ALLAYS	(5)
12	TRADE	(4)
14	LAND IN WATER	(4)
16	CALMED	(7)
18	RELICS	(7)
19	STUDENT	(7)
21	CREEPS	(6)
22	GREEK LETTER	(5)
23	CHOP SMALL	(5)
25	DIRE	(5)

ACROSS
1. SPORT, 4. NATURAL, 8. EATABLE,
9. OFFAL 10. AGREE, 11. EDINGS,
13. AIDE, 15. DISCUS, 17. ABIDES
20. LILY 22. ABDOMEN, 24. GRAPH,
26. PITON, 27. HANDFUL, 28. ADDRESS
29. SOLAR.

DOWN
1. STEWARD, 2. OUTER, 3. TABLEAU,
4. NEEDED, 5. THONG, 6. REFINED,
7. LULLS, 12. DEAL, 14. ISLE 16. SEDATED
18. BYGONES, 19. SCHOLAR, 21. INCHES,
22. ALPHA 23. MINCE, 25. AWFUL.

CROSSWORD ANSWERS

Down

Sell your home for a

fixed fee of only -

£1,250

inc VAT!

HomeMove
ESTATE AGENTS

By George Cupac

01163 123321

www.hoummove.co.uk

FOR SALE

Scan to book a **FREE** property valuation in Leicester!

rightmove Zoopla PrimeLocation OnTheMarket The Property Observer APPROVED REALTOR Chamber

T: 01163 123321 E: George@homemoveEA.co.uk W: homemoveEA.co.uk

* If you have already instructed an agent on a sole basis, please check the terms and conditions in order to avoid the potential of having to pay two agency fees.

**BOOK REVIEW –
EXPERIENTIAL ADVENTURES
BY LESLEY CLARY SAGE.**



This is a book of poems dedicated to the memory of Lesley's husband and soul mate, Tony Modinos.

Lesley is a local author and will be familiar to Evington Echo readers for organising Maypole Dancing in Evington Park and the Village Green. Tony helped with the administration and other jobs. They both also helped with organising the Health Fair in Evington Park in 2019.

Carol Leeming, MBE, FRSA, poet and playwright wrote that Lesley's poems "have a sure footedness to the composition, the music of her words, if you will. They offer threads of different images to follow, both pleasingly discursive and tenable. No doubt readers

will enjoy, be immersed, and much rewarded by her poetry as much as I have."

I have chosen the following poem for publication in the Evington Echo to also help remind readers how lucky we are to have the Arboretum and many mature trees around us. Just a two-minute walk takes you away from the Main Street traffic in Evington Village and into woodland.

IMAGINE A FOREST

Imagine a forest on a hot summer's day,
Sheltering life, from the dappled leaf
litter

To the highest eyrie of the osprey.
Open glades for bluebells, grasses,
rabbits, deer.

Oak with three thousand lifeforms
standing alone.

Beech, ash and lime spreading the
canopy,
Shades of green,
Shading out seedlings in their race to
the sun.

Constant buzzing of insects, bird calls
echoing.

Bees, wasps and squirrels, badgers, the
fox.

Imagine the acorns, nuts and fruits
Dropping as manna, eaten, spread.

Imagine the boltholes beneath the roots
Sheltering life from birth to death.

Imagine the streams rushing along
From steep tumble beginnings of
watery song,

And always the trees, deep on the
banks,

Mounting steep horizon, soaring in
ranks.

Allcombined more than the whole,
Delight for eyes and soaring soul.

Imagine the whole, soft smells, textured
touch,

A place of sanctuary gifted for us.
Imagine it gone.

LEAFY SHADY LANE

An article in Issue 5 of the Evington Echo, dated 1982, remembers Shady Lane as the way it used to be before World War I.



"Just a narrow track where of a summer evening, young men and women of the village would walk, lean over the bridge and talk of the future. They could not have visualised the amount of traffic which would one day thunder along this quiet and peaceful country lane, beloved of lovers."

In 1982, there was concern about the widening of the entrance to the Arboretum and the proposed siting of a large car park. Now, there is concern about the amount of traffic using Shady Lane with the development of 310 houses for 'Stoughton Park', which is opposite Stought Grange, where the Cow and Plough pub is.

The Evington Echo is calling on local residents to help keep watch on these developments and help ensure local residents are allowed some consultation on this. It can happen that an amenity provided for a community's local benefit has, in fact, brought further problems because of how it was planned.

Reference: Evington Echo, Issue 5 1982.

Think Eyecare! Think Eyeclinics!



**Award winning
opticians locally and nationally**
Providing an award winning service for NHS
and Private patients. Registering new patients
now. Home Visits also available for elderly
or housebound. Care Home Eyecare
services. Late Evening
Appointments.



To book an appointment:
Tel: 0116 273 0072
26 Main Street, Evington Village,
Leicester, LE5 6DN
Email: info@theeyeclinics.com
Visit us: www.theeyeclinics.com




DAVIES

Materials & Tools Ltd
Halsbury Street, Leicester LE2 1QA

★SAND ★CEMENT
★SLABS★TOP SOIL
★COMPOST★BARK

Same day delivery

★DECORATIVE
STONES
★ROCKERY STONE
Any quantity delivered

Tel: 273 4411 - 07885 200564

FESTIVAL OF ARCHAEOLOGY RETURNS IN JULY

The Festival of Leicestershire and Rutland Archaeology will be running throughout July this year, from 3rd July to 1st August. The county festival is part of the UK's biggest archaeological event, the national Festival of Archaeology and after two years of lockdown restrictions it comes back bigger and better than ever.

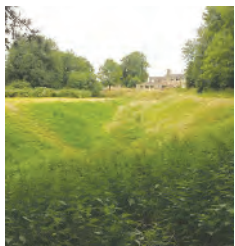
Local organiser, Peter Liddle, commented "We have fabulous sites locally and we plan to show people a different dimension to popular beauty spots like Bradgate Park, Beacon Hill and Abbey Park where the archaeology may go unnoticed – until our expert guides point it out."

More information about the Festival and a full list of events can be found at <https://leicsfieldworkers.org/festival-of-archaeology/>.

You can also contact Peter Liddle on 07758194353 or 2214508 or peter.liddle51@gmail.com or Mathew Morris on mlm9@le.ac.uk

Here are some guided walks you may enjoy, including one in Evington itself.

EVINGTON MOAT GUIDED TOUR



Tuesday July 27th: 7.00pm
Meet at the Church car park in the centre of Evington village, LE5 6FA.
Join Peter Liddle and Chris Hossack to visit 'Piggy's Hollow', one of the

best moated site complexes in Leicestershire next to Evington Parish Church, which will also be open. The complex includes the site of the manor house, fishponds and a mill dam. A hidden gem!

Booking 0116 221 4508; Peter.liddle51@gmail.com. Adults £4, children FREE.

BELGRAVE HALL AND GARDENS TOUR

Belgrave Hall & Gardens, Church Road, Leicester, LE4 5PE
Saturday 2nd & Sunday 3rd July:



11.30am, 1.00pm, 2.30pm & Wednesday 6th July, & 13th July, same times.

A wonderful chance to view the Hall and learn more about the history of Belgrave Hall and the fascinating families who lived there. FREE. Booking essential via www.leicestermuseums.org. Tel: 2254900

BELGRAVE HALL GREENHOUSE TOUR

Saturday 2nd & Sunday 3rd July: 11:30am



& 2.00pm
A unique opportunity to explore the greenhouses one of which dates back to the Victorian period. Tel: 2254900.

TOUR OF LEICESTER GUILDHALL

Friday 15th July: 11:30am, 1.00pm, 2:30pm

Friday 22nd July: Tuesday 26th July: Thursday 28th July: same times.



Leicester Guildhall, Guildhall Lane, Leicester, LE1 5FQ
Join Suzanne Gamble, one of our wonderful tour guides and explore

the history of Leicester's oldest medieval building. Find out about the characters who have passed through its historic doors and discover the role it has played in Leicester's history. FREE. Booking essential via www.leicestermuseums.org. Tel: 2254900.

GLENFIELD TUNNEL TOURS
Saturday 2nd & Sunday 3rd July: 10.00am,



11.30am, 2.00pm, 3.30pm & Saturday 9th & Sunday 10th July & Saturday 16th & Sunday 17th July, same times.

Meet at The Old Rectory (dbs managed offices) car park opposite the Forge Inn on Kirby Road, Glenfield LE3 8DG.
Stewards will conduct you along the track bed of the Leicester-Swannington railway to the Glenfield Tunnel, built in 1832 to transport coal from NW Leicestershire to Leicester. Stout shoes and a torch are strongly recommended.

FREE but donations welcome.
Booking essential on: <https://www.eventbrite.co.uk/e/glenfield-railway-tunnel-tours-tickets-328107437177>. Evington residents can phone Chris Hossack on 2415153.

EVINGTON PARK HOUSE WAS A VAD (VOLUNTARY AIDED DETACHMENT) HOSPITAL

Helen Pettman

Evington Park House stands in the middle of Evington Park, which was opened in 1947. Before that it had been a private estate and the house was bought and extended by John Burnaby for his retirement and a home for his unmarried daughters in 1836.

During the first World War it was used as a VAD hospital. When we remembered

this war in a special edition of the Evington Echo in 2014, some new information about daily life was found on the internet. It had been missed before because the VAD group moved from Knighton and called their new venue in Evington 'Knighton House'.

By the summer of 1914 there were 2,500 VAD hospitals in Britain. Of the 74,000 VAD members, two thirds were women and girls.



THE VAD HOSPITAL in Evington 1914-18

Throughout the long Autumn months of 1914, preparations were being made at the Base Hospital, which is now the Fielding Johnson building at the University of Leicester. The house was lent as a hospital by the owner, and then quickly fitted out. The first 19 patients came from the base on 28th December 1914.

"The day in the kitchen begins at 7.00am (approximately) when three somewhat sleepy individuals arrive to prepare breakfast of porridge, tea and cocoa, bread and butter, treacle and on the welcome occasions when gifts have been sent, eggs, ham or tongue. Breakfast is ready in the dining room at 8 o'clock, usually for more than half the men who are in hospital, and at the same time the night nurses and some of the ward nurses take breakfast to those who cannot come down for it. From breakfast all through the morning the kitchen is a very busy place. Soup has to be prepared Besides, there is the dining-room to be swept and dusted at least thrice daily, the pantry and kitchen to be kept clean, and last, but by no means least, there is the inevitable, washing up after each meal. Tea at 4 o'clock, preparation of soup and milk for supper at 7.30pm, and of vegetables or puddings, or anything that can be made ready for the following day, take up the attention of the kitchen workers till eight o'clock, or thereabouts.

It will have been noticed that early to bed is the order at Knighton House. Last week, however, we celebrated the winning of a Distinguished Conduct Medal by one of the soldiers, with a special entertainment followed by a supper in the dining-room and the men were allowed to stay up till nearly nine o'clock."

Most of the men at Knighton House hospital came from the Front and included regulars and reservists.

References: Wyggeston Girls Gazette by Miss Alice C. Henderson, the Commandant of the VAD Hospital. Evington Echo Issue 251 Special World War 1 edition 2014. Evington Echo picture archives.

FIVE WAYS THIS OLD DUFFER WILL TRY TO REDUCE HIS CARBON FOOTPRINT IN 2022 PART THREE – SAVE ENERGY AND MONEY IN THE SLOW LANE

Who doesn't want to reduce their fuel consumption, save money, cut down on plastic waste and pollution and reduce their carbon footprint? I'm going to bet that there aren't many people now screaming at their copy of the Evington Echo "Me! I don't want to do any of those things!"

I do have a harder set of questions for you.

Who is prepared to walk, cycle or take public transport rather than drive their car to work, school or college?

Who fancies driving at 50mph instead of at the national speed limit on major roads and motorways?

Who would be willing to drive their vehicle at no more than 20mph through the tranquil roads of Evington – especially down Main Street?

Is it a tiny bit possible someone might consider turning their engine off while waiting to collect their daughter/son/grandchild from our many fantastic schools? Perhaps more people are now shouting "Not me! I don't want to do any of those things."

Maybe these questions illustrate very clearly the difficulties we face when we want to make greener choices and reduce the terrible impacts on the environment caused by the way we live. To choose to be greener, we might have to choose to make changes to our lifestyles that we really don't feel like making. Often we oppose change because it's hard or scary; maybe we put off alterations to our

lifestyles to some unspecified future date (maybe never getting round to implementing them). Sometimes we're not really sure of the benefits of greener living choices – especially if we think we're the only ones making them.

The last thing any of us wants or needs is to be told how to lead our lives (nobody wants to be nannied) but here are a few ideas that we could all try and see how we get on. If you try them, you will save money and you will reduce plastic waste and pollution.

So, here's my plan (as ever, it's not rocket science):

- *Walk, cycle and use public transport where practical
- * Drive at a maximum of 20mph in built-up areas and 50mph on major roads
- * Slow down earlier when approaching junctions, using brakes as little as possible
- * Switch off my engine, with no idling, when the car is parked
- * On single carriageways, with no opportunity for other road users to overtake, avoid inconveniencing them by driving at the speed of the road

This article is abridged and a more-detailed copy, with examples of the benefits and savings that can be made, can be found on evingtonecho.com

SEDGEBROOK COMMUNITY GARDEN - UPDATE

Regular readers will know that Friends of Evington have been working with the city council parks department on a site agreement for a community garden on Sedgbrook Open Space.

There are three aspects to the project:

- * formal flower beds with a small picnic site

- * woodland flowers and shrubs
- * a wildflower mini-meadow

We can now report that the agreement is complete and that work will start very soon. We have also applied for the group to join the 'It's Your Neighbourhood' scheme, through the Royal Horticultural Society.

The garden is being funded through our National Lottery Community bid, under the heading People and Pollinators. Local residents are welcome to volunteer to help develop the garden and do not have to be members of Friends of Evington. No experience of gardening is needed and tools and advice will be provided.

If you have questions about the garden or would like to volunteer to help, you can let us know through the 'contact' page of our website.

For the latest information and outline plans, see the Evington in Bloom section of our new website friendsofevington.com Jeff Henry

SUDOKU

8		6	2				5
				9		7	
	7		8		5		2
		4		5		3	1
	2		1		8		7
7		1		2		8	
4			5		8		1
		7		3			
8					7	2	3

**TURN TO US FOR HELP
AND SUPPORT**

In your time of need we'll take care of all the funeral arrangements.
Call us 24 hours a day.

- Funeral Pre-Payment Plans
- Memorials

GINNS & GUTTERIDGE

13 Main Street
Evington
LE5 6DN

0116 273 4684

 Dignity
Part of Dignity plc, A British Company.

Quality Timber & Fencing Supplier
OPEN TO TRADE & PUBLIC
Fitting services available for:
Fences/Sheds/Gates/Decking/Pergolas

Repairs

Call for a free quotation
Entrance on Saffron Lane LE2 6UF

Quality Timber & Fencing Supplies

 **ZAFFRON
FENCING**

www.zaffronfencing.co.uk

07853637463

**SAVE OUR NHS
LEICESTERSHIRE**

**HEALTH CAMPAIGNS
TOGETHER**

A broad coalition to unite the fight for our NHS

www.SaveOurNHSLeicestershire.org

[@SONHSLeics](https://twitter.com/SONHSLeics)

CENTRE GARAGE

 **MOT
Testing
Centre**

Cars, Vans, Motorcycles,
3 Wheelers & Class 7s

Service & Repairs

Mon-Fri & 1/2 Day Sat

Tel: 0116 273 0728

104 Gwendolen Rd., Leicester Near Leicester General Hospital

EVINGTON COMMUNITY NATURE RESERVE – 222FOR2022 UPDATE

Our thanks to all those who agreed to plant a small tree in their garden. We can report that our target of 222 trees has been achieved. In fact, all 240 trees that we ordered were taken for planting by Evington residents and organisations. Those trees will already be in leaf and busy absorbing carbon dioxide from the air. In time they will provide shelter for birds and food for beneficial insects. Information about Evington Community Nature Reserve and details of how to care for your tree and devote more space in your garden to wildlife can be found on littlegreenshoots.uk



21 new trees donated by Friends of Evington were planted in Evington Park's fruit garden.



LEICESTER SECULAR SOCIETY

holds weekly lectures on Sunday evenings from 6.30pm at the Secular Hall, 75 Humberstone Gate LE1 1WB and on zoom.

(Log in meeting ID 991 3822 5897 Passcode 833685).

Sunday 19th June: Assisted Dying: End of Life Choice with Zena Deayton.

Sunday 26th June: Living Your Passion with Paul Bup.

Sunday 3rd July: Gotcha! Voltair.e, History, Truth, Journalism with Bill Leigh

For more information:
www.leicestersecularsociety.org.uk

EVINGTON PARK'S CAR PARK

The car park on The Common was once the site of a farm which was part of the Stoughton Grange Estate. It was tenanted by generations of the Gilbert family, and was known as Gilbert's Farm. In 1913 the Stoughton Grange estate was put up for sale and the farm was purchased by Ernest Gilbert. Some years later the farm was purchased by William Parker, of W & J Parker, Butchers, who employed farm bailiffs to manage it. One of the bailiffs was James Inchley whose daughter, Doris Vera, married Frederick Harry Brewin in 1934. They lived in Coleman Road (now St. Denys Road). From 1923 to 1928 William Gardner was the farm bailiff and his children attended the local village school.

In 1933 the farm was up for sale again and was purchased for £850.00 by Tom Trevor Sawday who owned Evington House. The Sawday estate was purchased in 1947 by The Leicester Corporation who opened it as a public park in 1948.
Dawn Kirkwood

SILVER SWANS BALLET CLASSES



Our weekly Silver Swans classes began in Evington Village Hall just over four years ago, initially starting out with one class a week there are now three of differing levels. These friendly, welcoming traditional ballet classes are aimed at the over-55's but suitable for any age, ability & experience. They're proving to be hugely beneficial physically, mentally & socially - regular classes can help to improve co-ordination, balance, posture, memory and wellbeing. We also regularly head to the local coffee shop after class (Vintage 186 Cafe) and whenever possible enjoy tea parties, awards, fundraising and the odd live performance too (hoping to be at the Evington Fete this year)!

We dance to a wide variety of wonderfully uplifting music and our Silver Swans classes have become a very important moment to escape every day life and to step into some well deserved 'me time' for many of our 'Swans'. If you are interested in coming along to any of our classes (Thursday mornings) for a trial please contact Vanessa Burzynski on 07765 407323 /

nelliebeeballet@hotmail.com /
www.nelliebeeballet.co.uk



Vintage 186 Cafe Bar and Gift Shop



Serving breakfast,
lunch and drinks
Monday to Saturday

11 Main Street, Evington
LE5 6DN

Please call 0116 2490789

Facebook: Vintage 186 Evington
E-mail: Vintage186leic@gmail.com

A & L Landscapes

All garden work undertaken

Fencing Block paving

Decking Astro turf

Turfing Patios

Winners of

Oadby & Wigston in bloom

& East Midlands in bloom

No job too small

Call Andy on

07513 568 361

or 0116 241 9214

Call Louise on

07704 775 673

Erington's LEICESTER'S FINEST WINE MERCHANT

EXTENSIVE STOCK OF VALUE
FOR MONEY WINE

We lend you glasses free of charge
Ring Simon March on 254 2702

120 EVINGTON ROAD

LEICESTER LE2 1HH

simon@evingtons-wines.co.uk

www.evingtons-wines.co.uk

Leicester u3a Learn Laugh Live

For more information about Leicester u3a contact publicity@leicesteru3a.org.uk

Silver Swans Ballet Classes

(Over 55's) for Beginners through to Advanced - Thursdays mornings at Evington Village Hall. For details please contact Vanessa on 07765 407323. nelliebeeballet@hotmail.com

19th Leicester (Evington) Scout Group

We have three sections according to age: Beavers for ages 6 to 8, Cubs for ages 8 to 10, and Scouts for ages 10 to 14, all meeting at our HQ on Davenport Road. If your child is interested in joining you can contact us in any of the following ways:
Phone - 2209017
Email - info@evingtonscouts.org.uk
Facebook - search for Evington Scouts and send us a private message.

Evington Garden Club

16th August 'Garden Joys' with Stephen Ashpole.
20th Sept. 'Pumpkin Extravaganza' with Russell Attwood.

This club meets on Tuesday afternoons in the Village Hall on the second Tuesday of the month from 2.30pm. Doors open at 2.00pm. Visitors £2.00. Membership £12.00 p.a.
For any queries please phone Peter Jackson on (0116) 2735487.

My Word Poetry Group

Tuesdays at Blends Cafe Downing Drive
4.00pm to 5.30pm

Evington Park Bowls Club

Monday 5.30 - 7.30pm.
Tuesdays 10.30am - 12.30pm and 2.00 - 4.00pm.
Wednesdays 2.00 - 4.00pm.

Evington Local History and Heritage Group

We meet in St Denys Parish Centre at 7.00pm on the second Thursday of the month. Single talk £3. Year Membership 10 meetings £20 or Family Membership £30. Further details from Chris Hossack 2415153.

June 9th. Susan Barton. Park to Parks. The story of Western Park and area.

Walking

Walking using these long poles is a great way to improve your mental and physical wellbeing.
Contact: ministryofnordicwalks@gmail.com or phone Penny on 07502 576764.

Bhangra Classes

Mondays: At Judgemeadow Community College for adults and children.
Saturdays: at Hamilton Com. College for adults.
Tel: Preet on 07525153284 for more information.

Evington Women's Institute

Second Tuesday in the month 2.00pm - 4.00pm.
Evington Village Hall.
Tel: Barbara Garlick on 07713804407.

Evington Social Club Evington Rummikub Club Evington House Yoga

See the three adjacent posters.

An art exhibition raising funds for Myeloma Cancer

On Saturday 23rd July
at 24 Tavistock Drive LE5 5NT.
11.00am to 5.00pm.
Telephone Jay Chauhan for more information:
Tel: 07921 093112.

Goodwood Evangelical Church Gamel Road Leicester LE5 6TD

11.00am. Sunday Service. All Welcome.
4.00pm on the first Sunday of each month - Messy Church. All ages.
Wednesdays 9.30am - 11.30pm. The Ark. Parents, carers and pre-schoolers.
Thursdays 7.45pm Prayer Meeting.
For further details contact Stephen Taylor on 079022946004.
www.goodwoodevangelicalchurch.org.uk

St. Denys Church LE5 6FA

Open church every Thursday 9.00am -12.00 noon.
All welcome.

Monday Meet 2.00pm - 4.00pm at the Parish Centre on the 1st and 3rd Mondays every month.

Musical Toddler Group - Fridays at 10.00am during term time in the Parish Centre. All pre-school children invited.

For more information: visit St. Denys website www.stdenys.org.uk.



Evington House YOGA
IN PARTNERSHIP WITH FRIENDS OF EVINGTON
AT
Mayflower Methodist Church
Ethel Road
Leicester
LE5 5PE

MONDAY - 6.00 - 7.00pm With Manjula (Ladies only)
WEDNESDAY - 6.00 - 7.00pm With Manjula (Ladies only)
£3.00 per session
Manjula on 07448 732696
manjula.odedra.yoga@gmail.com



EVINGTON RUMMIKUB CLUB
Rummikub is a tile based game for 2 to 4 players, combining elements of other games. It can be easily taught.
EVERY MONDAY
10.30am to 12.30pm
except bank holidays
£1.50 per meeting
For more information
Contact Lesly Biro
0116 2419096

SMALL ADS

Trade and professional rate £2.50 for up to 25 words. All other ads. 50p for maximum of 25 words including telephone number. Please write clearly and leave your ad., with payment, in an envelope marked Small Ads at Bennett's Home and Garden Supplies, 30 Main Street.

DON'T MOAN ABOUT MOWING

Contact: **J.B. GARDEN SERVICES**
(Large & Small Lawns & Other Gardening Jobs)
Tel: 0116 259 7186
Mob: 0780 125 9687

FOR SALE Oil filled radiator - electric. Offers. Tel: 2738365.

FOR SALE Bicycle rack for car. Offers. Tel: 2738365.

FOR SALE Assorted golf clubs and bag and balls, etc. Offers. Tel: 2738365.



Musical Toddler Group
Friday 10am
In the Parish Centre
St Denys Church
Evington
LE5 6FA
All pre-school ages welcome
weekly during term time
Parking available opposite the church



Evington Social Club
Why not come and join us every
Wednesday 10.30am - 12.30pm?
Packed with activities, such as
Speakers, Crafts, Games and lots of conversations and refreshments.


Information from Renu on 07514202579
Come and have some fun.
Join us at Evington House.

MAIS

HOME IMPROVEMENTS

Est 1999

You Aspire We Build

- Honest & Reliable Service
- Free Estimates
- High Quality Workmanship



**Building Work • Bathrooms
Kitchens • Plastering
Plumbing • Electrics
Floor & Wall Tiling**

City & Guilds

07944 213 496

OADBY FENCING & LANDSCAPING

London Road, Oadby

All types of Fencing and Gates.
Domestic and commercial
garden maintenance.
Domestic patios, paving, turfing,
artificial grass and mowing.

Contact: 07960 009252
or 0116 271 3032

Email: justinsharp40@gmail.com

J. & A. PHARMACY

19/21 Main Street Evington

Tel: 273 6047 *No early closing

- Comprehensive range of Toiletries and Hair Colours
- Comprehensive range of cards
- Knitting wool, patterns and haberdashery
- Collection and delivery service if required
- Opening Hours: Mon - Fri: 9 - 6 Sat: 9-1

Please help now support
us to alleviate suffering
in Northern Ethiopia.

Donate through PayPal or
website <https://a-cet.org>

African Children's Educational Trust
Registered Charity 1066869

WE LOVE SELLING & RENTING HOMES

CALL BARKERS

FOR YOUR FREE VALUATION
0116 270 9394

DISCOUNTED FEES ON THE PRESENTATION OF THIS FLYER AT YOUR NO OBLIGATION VALUATION

Barkers

Your property is our business

79 Queens Road Clarendon Park Leicester LE2 1TT • barkers1985.co.uk

Kneller & Kneller Ltd

For all your electrical requirements

- Rewires • Extractor Fans • Wall Heaters
 - Garden Supplies • Showers • Central Heating
 - Wiring • Burglar Alarms • Security Lighting
 - TV Points • Telephone Points • Emergency Lighting • Wall Lights • Storage Heaters
 - Up-Grading electrics to present regulations
 - Fire Alarms • Test & Inspections
 - Portable Appliance Testing
- All work guaranteed and complies to BS7671 Wiring Regulations.
Contact Kevin for a **FREE** quotation
T: 0116 2873404 M: 07836 734828
Email: k.kneller@virginmedia.com
Domestic - Commercial - Industrial



APPROVED CONTRACTOR

CITY MOWER SERVICES

Briggs & Stratton engine repairs



Mountfield, Hayter, Honda
Qualcast etc.
Used Mowers & parts
bought & sold
Shears sharpened

Unit 5, 57a Gwendolen Road, Leics LE5 5PL
0116 273 4027

NEWTONFALLOWELL

ESTATE AGENTS - OADBY

Do you have a property to sell?



Richard Chesterton

Call us today to book in for your **FREE** property valuation...

0116 366 0990

2 Brooksby Drive, The Parade, Oadby, Leicester LE2 5AA

Email: oadby@newtonfallowell.co.uk

Zoopa
Smarter property search

rightmove
Real Estate

LEGARD'S

ELECTRICAL & PLUMBING
SERVICES

Security Lights Bathrooms
Extra Points Showers
Rewires Extra Rads

Free estimates All work guaranteed

A complete service on your doorstep
Telephone: (0116) 240 3269 or (0116) 281 3283

BENNETT'S

HARDWARE • GARDEN SUPPLIES • DIY



L.E.D. Light Bulbs

Low Prices
and a Wide Choice
WARM WHITE • COOL WHITE
DAYLIGHT

LARGE RANGE OF FLUORESCENT TUBES

30 Main Street Evington Village
OPPOSITE THE CEDARS PUB Tel: 273 7116