



# Evington Echo

[www.EvingtonEcho.co.uk](http://www.EvingtonEcho.co.uk)

Keeping you up to date with Evington's news

The newspaper of Friends of Evington Charity No. 1148649

Issue 273

August and September 2018

Circulation 5,900

## VINTAGE 186 CAFÉ BAR AND GIFT SHOP LAUNCHES A CHATTER NATTER TABLE



### The Chatter Natter Scheme

The scheme was created on a wet and windy day when a mum called Alex was in a supermarket café with her four month old son. He wasn't great company at that age and she was feeling fed up. She looked round the café and saw an elderly lady who looked just as down as she was and also there was a young guy with severe additional needs with his support worker who also looked fed up. She started to think about the positive impact they could all have on each other if they could all have a chat. Alex said, "I know from experience that when you are feeling lonely, a short interaction with another human can really brighten your day. It was right there and then

the 'Chatter & Natter' table began (in my head and dreams to start!) but now it's a reality. There are now over 100 cafes with this scheme.

### The Chatter Natter Table at the Vintage 186 Cafe Bar

Suzy, the owner of this café on Main Street, Evington says "I am very proud to be part of the chatty cafe scheme. This table is dedicated especially for those who are on their own and looking for someone to chat to."

Whether you want a 5 min. chat over a nice hot brew or an hour long interaction it can help to have a positive impact on your mood and state of well being. Sometimes just a brief meeting with another human can really help to brighten up your day or someone else's day.

Written by Helen Pettman and Kally Korotana

Designed by Jason Chauhan



## The Echo

Managed by Friends of Evington's trustees

### Coordination and Editorial

Helen Pettman 2204525  
evingtonecho@gmail.com  
helenpettman@gmail.com

### Advertisements.

evingtonecho@gmail.com 2204525

### Diary - For community activities, send dates for diary to:

evingtonecho@gmail.com 2204525

### Graphics

Jason Chauhan

### Finance

Nilesh Chauhan  
Doug Gillain

### Page editors, Reporters/Photography

See names with articles

### Distribution

Chris Hossack 2415153  
Harry Pettman 2204525  
Ben Sherriff 2739709

### Proof Readers

Julia Hughes  
Addy Tyler

[www.evingtonecho.co.uk](http://www.evingtonecho.co.uk)

[evingtonecho@gmail.com](mailto:evingtonecho@gmail.com)

facebook: friendsofevington1@gmail.com

## EDITORIAL

The Echo team will be sorry to see the LAT (Leicester Ageing Together) projects come to a close and we hope that many of these projects will leave a legacy with either groups running themselves or able to find partnerships that can support them. This issue has articles about LAT funded projects on pages 6,7,8,9 and 12.

I would be grateful if readers could let me know of community groups in the Evington area that would be willing to send in articles about their activities and be featured in the Clubs, Societies, Activities and Events on pages 14 and 15. We are also keen to hear about individuals who are helping others through their skills and talents.

Evington in Bloom has had a very busy year coordinating the various groups to highlight their pride in this area. They have worked with a film crew called Electric Ray to document three main projects at Evington Park, Graceworks and Mayflower Primary School. This will be broadcast as one of the Britain in Bloom series 2, coming out around April next year. The film crew followed the regional judges as they evaluated some of the projects in July. Evington in Bloom then had more judging when the Britain in Bloom people came in August. Results will be available by mid October.

Our next issue due out on 4th October will be featuring Evington Fete and Show in full and commemorating 100 years since the end of World War 1.

Helen

## DE MONTFORT HALL'S AWFUL AUNTIE DELIVERS AWESOME RESULTS FOR AGE UK!



Age UK Leicester Shire & Rutland is a local independent charity and part of the Leicester Ageing Together project that targeted Evington and 5 other Leicester wards to run projects that help combat isolation and loneliness in the elderly. Leicester Ageing Together is National Lottery Funded.

A fundraising event at De Montfort Hall raised over £1,400 for the charity Age UK. David Walliams' children's book 'Awful Auntie' was brought to life on the stage. The show, an amazing tale of frights, fights and friendship, follows Stella's adventures visiting London with her parents. Stella Saxby is the sole heir to her family home, Saxby Hall, but when awful Auntie Alberta decides she wants it for herself, Stella is in for the fight of her life and her Auntie really lives up to her name!

Age UK Leicester Shire & Rutland offers a wide range of services for older people with physical frailty, impaired mobility, mental health issues such as dementia and learning disabilities and for those who are at risk of social isolation, loneliness, fuel poverty or financial abuse. Many services are free at the point of delivery. For more information contact 299 2233.

Awful Auntie was performed by Birmingham Stage Company at De Montfort Hall from 5th to 8th July 2018.

Edition	Deadline	Published
2018	(Friday)	(Thursday)
Oct./Nov.	14th Sept.	4th Oct.
Dec./Jan.2019	16th Nov.	6th Dec

### PLATINUM LEICESTER CHAUFFEURS



0116 4422192

Airport transfers by suited driver in executive Mercedes E class at taxi prices

[Platinum-chauffeurs.com](http://Platinum-chauffeurs.com)  
Fully licenced driver and car



### Adrian Lawrie Personal Computers

Hardware, Software & Internet.  
Installation, Maintenance & Upgrades

514 Uppingham Road  
Leicester LE5 2GG

Telephone: 0116 243 3325  
Mobile: 0770 844 4516  
E-Mail: [boskop@tiscali.co.uk](mailto:boskop@tiscali.co.uk)

### HOLIDAY HOME SOUTH GOA (VARCA)

- Self catering
- 3 bed town house with en-suite
- Furnished with A/C
- Swimming pool
- Shops nearby
- 10 mins walk to a very clean Varca beach

Contact: Dave 07519 710 901

Anil 07471 913 326

Suresh 07392 320 817

Email - [ddp0071003@hotmail.com](mailto:ddp0071003@hotmail.com)

## DAVIES Materials & Tools Ltd

Halsbury Street, Leicester LE2 1QA

★SAND ★CEMENT  
★SLABS★TOP SOIL  
★COMPOST★BARK

*Same day delivery*

★DECORATIVE  
STONES  
★ROCKERY STONE

*Any quantity delivered*

Tel: 273 4411 - 07885 200564

## KASHB KARS

07739448436

- Female Taxi Driver
- Advance Bookings Only
- Leicester Based
- School Runs/Corporate enquiries welcome
- Day Trips/Weddings/Parties
- 20% off when Booked & Paid for 7 days in Advance
- 50% Discount On Every 5th Trip (Up to 5 Miles)
- Minimum fare of £2.50 up to a mile from Evington Village

### Airport Prices

East Midlands	From £24
Birmingham	From £38
Luton	From £69
Stansted	From £91
Manchester	From £91
Coventry	From £36
Heathrow	From £91
Gatwick	From £117



## FRAMEWORK KNITTERS COTTAGE HOMES

Just over the Evington border in Oadby is a charity that helps retired people from the knitting, hosiery and allied trades have beautiful retirement homes in a wonderful setting. There is accommodation for thirty-nine residents.

These almshouses were built after similar ones in London were sold in 1906. The Oadby cottages are built on land gifted in trust to the Company.

Many cottages were rebuilt in 1999 thanks to the generosity of J. R. Corah Foundation; there is a rolling programme to bring all of the accommodation up to modern standards.

The homes are available to retired people who have spent the major part of their working lives in the knitting, hosiery and allied trades. They live independently, but benefit from being in a small community of people with similar backgrounds and life experience. Communal activities are arranged by both the Company of Framework Knitters and the residents themselves.

Applicants (or their spouses) must:

1. Have worked in the industry for most of their lives, both shop floor and managerial are eligible.
2. Be of State Pension Age and retired.
3. Be in reasonable health and able to look after themselves (there are no nursing facilities) Carers assistance is allowed.
4. Be able to furnish their accommodation.
5. Have assets not exceeding £75,000.

If you fit this criteria, or know anyone who could benefit from living in one of these almshouses, then please contact Helen Meek at fwkoadby@aol.com. See advert below.

## THE SINGING POLICEMAN – KULBINDER RAI



From left to right Professor Andrew Fry, a scientist at the Cancer Research Centre in Leicester, Kulbinder Rai, the Singing Policeman and Cllr. Manjula Sood, Assistant City Mayor

Kulbinder Rai, an Evington resident, is pictured above (centre) handing over a £1000 cheque to Cancer Research. Kulbinder started to raise money for cancer research following the death of his wife from pancreatic cancer eight years ago. Kulbinder decided to help raise money for cancer charities through his singing and the name 'Singing Policeman' came about because Kulbinder has been a special constable for the city for 18 years.

If you would like to learn more about Leicester's Research Centre, there is a coffee morning at the Rothley Centre from 10.00am to 12 noon on Saturday 1st October. For more information tel. 2518168.

### A MINDFULNESS SESSION IN EVINGTON PARK

A walk in the park or alongside water can have a positive effect on your mood and state of mind, restore your mental and physical wellbeing and help reduce stress.

There will be a session taking place in Evington Park on Thursday 20th September from 10.00am to 11.00am. To book, or for more details about sessions in Abbey Park in September, email Leicester.gov.uk/parks-volunteering.

## EVINGTON OVER 50S SWIMMING GROUP



From left to right, Mary, Betty, Joyce, Vera and Florence

On Wednesday 11th July, a buffet was held by the Evington over 50s group to celebrate the 90th birthdays of six of its lady members. An enjoyable time was had by all.

### CROCHET FOR ALL



Have you ever thought of getting your craft skills on? Do you fancy yourself as a granny square or a full-blown blanket? It doesn't matter, the 'Crochet for All' group is ready for any level of budding crafters from complete beginner to a 'professional' just like our tutor, Abdul, who has 40 years of crochet experience under his belt - that's a lot of stitches.

Crochet for All runs on Tuesday from 10.00am to 11.30am at Evington House, Evington Park LE5 6DE. The charge is £1.50 per session. You can bring your own crochet kit or buy a starter kit at the group for £5.00.

For further information contact Abdul Bux Tel: 07828015186 or 07910431044 or 2204525. We look forward to meeting you.

## Have you worked in the Textile Trade?

Retired now and looking for a better lifestyle, but concerned about rising costs? Ready to enjoy the comforts of community living, just want to know who to contact? Consider the Framework Knitters Cottage Homes at Oadby, Leicestershire - purpose built and maintained for like minded people.



Small and friendly, a village style set around an attractive green with a Community Hall, the 26 Cottage Homes promote independent living for both single people and couples. Applicants should have been working in, or associated with, the knitting Hosiery and Allied Trade. Your comfort is supported by a close group community with planned activities, social and good neighbourliness - come along to see us in our green and pleasant setting.

If this interests you, then call Helen Meek on 0116 271 2171  
[www.frameworkknitters.co.uk](http://www.frameworkknitters.co.uk)



## SHOWER MASTER

WE OFFER BOTH A SUPPLY AND  
INSTALLATION SERVICE OR  
INSTALLATION ONLY

### SHOWERS

Showers Installations  
Shower Replacements From £149  
Electric, Mixer Or Power Showers

### SHOWER REPAIRS & ACCESSORIES

New Shower Heads, Shower Hoses, Shower  
Riser Rails, Shower Pumps, Shower Pull  
Cord, Switches, Support Rails, Grab Bars,

- Free Estimates
- From the Largest to the smallest job

Having difficulty getting in and out of the bath?  
Make life easier and have an easy  
access shower cubicle fitted!  
We take care of the whole installation.

Serving the bathroom trade in Leicester & Rutland for 36 years

### SHOWER MASTER

0116 24 34 111  
44 Dalby Avenue, Bushby,  
Leicester, LE7 9RD.  
MOBILE: 07711 838024  
Email: perkins44@talktalk.net

Formerly of  
The Shower Centre,  
Uppingham Road.



# Letters

## STOLEN PLANTS

Dear Editor,

Plants that have been paid for by voluntary organisations and have been planted by volunteers for all to enjoy have been stolen from the Burnaby Gardens in Evington Park.

Volunteers feel sad that some selfish, mean-spirited person has stolen some of them and in the process has damaged the ground cover membrane. We hope whoever has taken the plants is ashamed of their actions. Thank you to the volunteers for all the hard work and dedication.

Babooji Odedra

## FLOWERS ON VERGES

Dear Editor,

The Leicester City Council Parks services in partnership with Urban Buzz have been trialling the introduction of various types of flowers into grass verges. Goodwood Road verge has two distinct areas.

The first is a meadow planting of wild flowers with the introduction of Yellow Rattle to parasitize the grass and reduce its vigour to enable the flowers a chance of survival in a nitrate rich sward.

The second trial is a band of annual flowers to attract and nurture pollinating insects. There are two mixtures; one, a traditional cornfield wild flower mix. two, an ornamental annual mix with a

potentially longer flowering season. Both sections of annuals are beginning to show some attractive flowers, which is very welcome considering how they have struggled with the dry spell

Unfortunately, they are so attractive that someone was seen cutting a bucket of flowers one evening.

The person that rang me was very upset, as indeed was I and we all should be.

Such selfish actions shame society and dishearten the volunteers involved. I very much doubt the lady that was responsible is a resident or reader of the Echo, but if she is, I hope she will reflect on her actions and realise her error.

In the meantime, I am hoping that when we get some rain it will not be too heavy to damage our flowers, but sufficient to bring forth a riot of colour late into the season.

Can I just say that as a horticulturalist, I salute all of the volunteers involved in the Evington in Bloom, your beds and tubs look delightful.

Mick Eaton

Horticultural Advisor

## WHITE POWDER ALL OVER MY GARDEN

Dear Editor,

Three weeks ago there was a dense smoke like substance coming from Evington Park into my garden. This left a white substance that looked toxic. The fire brigade told me to hose it down. Three weeks later it happened again. I have just

found out that this was caused by four fire extinguishers being let off in the Evington Park depot which backs onto my garden.

I would have appreciated much earlier information from Park Services explaining what it was. Action was taken eventually through Cllr. Deepak Bajaj's intervention because he agreed with me that this was a serious incident.

Floss Lacey.

## LOCAL GOVERNMENT CUT BACKS - IS OADBY LIBRARY LIKELY TO BE CLOSED NEXT?

Dear Editor,

I too want to keep Oadby library open and the highest officers in the council will no doubt keep their jobs. The reason a lot of councils are broke isn't because some people don't pay their taxes, and the council don't retrieve it. I wouldn't lay the blame at local government politics but at central government and the financial economic system. The main reason councils are broke at its roots is because central government had to deal with the 2008/09 banking crash.

I agree that non-payment of council tax is an issue and does not help, but it's almost peanuts compared to the amount that central government has cut to local government. The bankers have got away with it and there's a conspiracy of silence. Name and address supplied

Carpentry & Joinery By  
**L.J.W.**  
Over 20 years experience

**City  
Guilds  
Qualified**

- Kitchens Supplied and fitted
- Solid Wood Flooring
- Laminate Flooring
- Skirting
- Architraves
- Locks
- Doors
- Garage Doors
- Decking
- Sheds
- Gates
- And more

For a **FREE** Quotation Please Contact Lee on:  
 **0116 273 6625**  **0789 148 4088**  
[ljwcarpenter@live.co.uk](mailto:ljwcarpenter@live.co.uk)

**R. GLENTON & SON PHARMACY**

PRESCRIPTION ORDER AND COLLECTION SERVICE  
DELIVERY OF MEDICATION IF REQUIRED  
OPENING HOURS:  
MON - FRI 9AM-1PM & 2PM-6PM  
SATURDAY 9AM-1PM

DISABILITY AIDS ARE STOCKED AND NEXT DAY AVAILABILITY  
STOP SMOKING SCHEME

WIDE RANGE OF DRESSINGS STOCKED  
KNITTING WOOL, PATTERNS AND HABERDASHERY  
WIDE RANGE OF TOILETRIES AND HAIR COLOURS

49 WELLAND VALE ROAD, EVINGTON,  
LEICESTER, LE5 6PX  
TEL: 0116 241 5633

## Guiding you through those difficult legal life-changing times.

Gerard James is a family-owned Estate Planning practice committed to providing you with a friendly, efficient and yet affordable, professional service.



- Wills
- Trusts
- Lasting Powers of Attorney
- Funeral Plans
- Probate Administration

  [www.gerardjamesestateplanning.co.uk](http://www.gerardjamesestateplanning.co.uk)

Please contact  
Gerard O' Halloran today  
**07905 748073**

**gerardjames**  
Estate Planning Limited

Gerard James Estate Planning Ltd  
working in association with Countrywide  
Tax and Trust Corporation Ltd

## TOOLS FOR SELF RELIANCE (Practical help for practical people)

Info@tfsr.org



F / tools for self reliance  
T / @tfsr  
www.tfsr.org

Tools for Self Reliance is a UK based charity working to reduce poverty in Africa.

They work with local partners to deliver programmes of tools and training, enabling individuals to learn a skill and earn a sustainable living.

The local group meets in Evington House in a workshop provided by the Council. They repair tools and sewing machines to send to Africa.

Their new friendly team welcomes new volunteers. Why not call at the workshop on a Monday morning and see what they do.

Alternatively, contact:

Gill at gill.barradell@gmail.com (2882745)

Or George at g.c.@talktalk.net (239 2913)

### A GUIDED TOUR OF EVINGTON WITH CHRIS HOSSACK -



SATURDAY 8TH SEPTEMBER  
PART OF HERITAGE OPEN DAYS

This guided tour of Evington takes place once a year. The tour starts at the ancient

and beautiful Parish Church of St. Denys, meanders through the heritage village, visits Evington Chapel and finishes in Evington Park with tea under the old Mulberry trees. There's lots of fascinating history throughout the tour.

The tours will be led by our local historian, Chris Hossack who leads on organising Evington's History and Heritage group.

The tours start at 11.00am and 2.00pm from St. Denys Church and lasts about 2 hours. The route will be wheel-chair accessible and a gentle stroll through the village with stops to sit at the Baptist Chapel.

Did you know that the organ in Evington Chapel (a stop on the route) used to belong to Prince Albert, husband of Queen Victoria?

Did you know that Evington House was once a Volunteer run hospital?

Did you know that one of the best moated sites in Leicestershire is on our doorstep?

No booking is necessary, but for more information contact 2204525 or 07910431044.

You will be amazed at how much fascinating history there is in Evington.



**Next Care**  
Caring for all...

Call us today to discuss your care needs...

Next Care is a Domiciliary Health Care Services Provider. We offer a 24 hour service from personal care to night care calls. At Next Care we promote the welfare and well being of our clients and provide a service which enable service users to remain in their own homes for as long as they wish. We offer practical support to implement our service users to be independent with dignity and choice. Our service is sensitive and responsive to race, religion and the cultural background of our service users. We aim to meet our clients individual needs. Our care is maintained and delivered by our professional, committed, friendly and well trained team.

\* Personal Care \* Domestic/Cleaning & Shopping Services\* Night and Day Care \* Transport Services \* Dementia \* Physical Disabilities  
\* Caring for adults under & over 65 \* End Of Life Care \* Palliative Care

Next Care Ltd  
23 Alcester Drive  
Evington, Leicester  
LE5 6LB  
0116 241 7425  
07597640540  
info@nextcare.org.uk  
www.nextcare.org.uk



**Think Eyecare!**  
**Think Eyeclinics!**



Award winning opticians locally and nationally  
Providing an award winning service for NHS and Private patients. Registering new patients now. Home Visits also available for elderly or housebound. Care Home Eyecare services. Late Evening Appointments.



To book an appointment:  
Tel: 0116 273 0072  
26 Main Street, Evington Village,  
Leicester, LE5 6DN  
Email: info@theeyeclinics.com  
Visit us: www.theeyeclinics.com






## H is for History and Heritage...

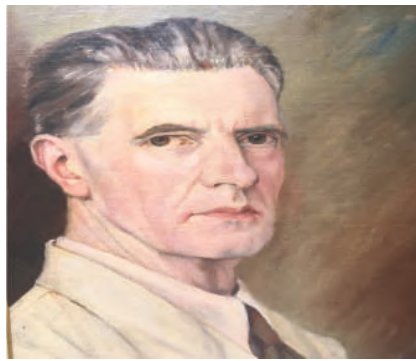
"To know your future you must know your past" (George Santayana)

This well known quote may resonate with many people, none more so than Mary Powell, a participant on L4A'S Social Prescribing project.



Mary Powell

As an only child, Mary had always been interested in her family history and lineage. On reading two fragile notebooks belonging to her father, Harrison R Powell, written during his service as a soldier in WW1, she was intrigued by the compelling information revealed in them.



Harrison R. Powell  
Self Portrait

"My father was a very creative man, a gifted artist who loved to sketch and draw. No wonder then that his notebooks, diaries really seemed to paint pictures with words.

"His writing is neat, often brief, but simultaneously chronicles the mundane and miraculous, concisely capturing the futility of war.

"A diary entry from 30th September 1917 reads:

'Shells all around the Mess. Had a hellish time 4 o'clock. 7 o'clock sheltering in Mess when shell hit it. Buried one fellow - tried to get him out but couldn't!"

"As his daughter it felt completely right and natural to collate this fascinating material and share it with others. Beyond learning about him personally, it sheds a light on important aspects of social history from the First World War. In his case, simply being human - vulnerable like

many others around him. After many years of painstaking research I decided to write and publish an illustrated book entitled 'A Private Perspective of the Great War'.

"I'm delighted that the book will feature next month in a special display at Evington library called 'BOOK:CASE:STUDY' - profiling local people involved on L4A's Social Prescribing project.

"I feel honoured to have been invited to take part in this exhibition and show my artwork alongside my father's paintings and sketches. He inspired and nurtured my love of art. In essence, this a touching tribute and loving legacy from us both."  
AB

Please note: L4A's Social Prescribing project BOOK:CASE:STUDY exhibition is currently on at Evington Library featuring Nigel King. Mary's work will be on display in September.

## DO YOU HAVE A TALENT YOU WOULD LIKE TO SHARE?

Singing      Playing an instrument  
Magic tricks      Dominos      Chess      Dancing  
Hand massage      Nails      Yoga      Baking  
Pool      Cake decorating or anything else interesting.

Arbor House is a Care Home on the High St in Evington and we would love you to share your talent with us.

Either pop in to see us or call on 273 9033 and ask for the Activities Coordinator, Sue.

**Ervington's**  
  
**LEICESTER'S FINEST WINE MERCHANT**  
EXTENSIVE STOCK OF VALUE FOR MONEY WINE  
We lend you glasses free of charge  
Ring Simon March on 254 2702  
120 EVINGTON ROAD  
LEICESTER LE2 1HH  
simon@ervingtons-wines.co.uk  
[www.ervingtons-wines.co.uk](http://www.ervingtons-wines.co.uk)

  
**Denath & Co. Solicitors**  
Aiyub Denath      Office:  
Solicitor      0116 225 4929  
• Commercial Property and Leases  
• Residential Conveyancing  
• Bankruptcy & Insolvency  
• Small Business  
• Wills & Probate  
• Commissioner For Oaths

**ALLSIDES**  
**GUTTERING REPAIRS**  
REPAIR ■ CLEAN ■ REPLACE  
SLIPPED TILES/SLATES  
**CALL STEVEN:**  
**0116 2161 777 / 07970 032814**  
e: fcf2211@gmail.com  
SEE OUR 5★ GOOGLE REVIEWS  
[www.allsidesguttering.co.uk](http://www.allsidesguttering.co.uk)

**General Carpentry**  **Mike Owen**  
Est. 1998  
If it is anything to do with wood from MDF cupboards to fences and gates to Custom designed Garden Rooms done to your specifications.  
With over 10 years experience I will be happy to discuss your requirements.  
No job too small or big.  
Just give me a call.  
**Mob: 0777 0980079**  
**Tel. (Evenings): 0116 212 2793**

**PLUMBING**  
Friendly, Reliable & Service  
**HEATING**  
• Registered Plumber  
• No Job Too Small  
• OAP Discounts  
Call(anytime): Mr Driver  
**TEL: 0116 2713334**  
**MOBILE: 07773514619**



Our programme launched in October 2015. We have been a partnership of 17 voluntary sector organisations - ranging from national charities to small community organisations. We have focussed delivery in the Belgrave, Evington, Spinney Hills, Thurncourt and Wycliffe areas of the city and have worked with over 5500 people, utilising 1300 volunteers.

Over 800 people in the Evington area have been involved with Leicester Ageing Together.

## In Evington we have delivered...

- Weekly local walks with Sallie from Living Streets
- Poetry, Cooking, Family History, Drumming, Crafts, Alternative Therapies classes, along with Smart Phone & Tablet sessions through the WEA
- Singing for the Brain sessions with Kyle of the Alzheimer's Society
- Hearing Screenings and a Deaf Friend's Group with Action on Hearing Loss
- Befriending & Mentoring through Age UK and Papworth Trust
- Repairs, gardening, one off cleaning with Pete's Papworth Trust Task Force
- Fun, social events with Downing Drive's Patients' group with Anita, Learning for the 4<sup>th</sup> Age
- Anything Goes Social Groups with Age UK – now coordinated by Jaishri



The Big Lottery requires us to collect data to be able to evaluate the difference, if any, we are making to people's lives. **Thank you** for completing the various Questionnaires. We want to understand how best to reduce social isolation & loneliness of people over 50.

Find out what we have learnt, visit our website

[www.leicesterageingtogether.org.uk/about-us/learning-from-lat](http://www.leicesterageingtogether.org.uk/about-us/learning-from-lat)

With some of our projects are now coming to an end, we are looking at various ways that they might become sustainable, possibly through other funding, by working together with other organisations, with volunteers taking a more active role or maybe by charging a small membership fee.

**Anything Goes Social Group** Open to new members – people over 50 who live in Evington and would like to try new activities, meet new people and go on day trips. Evington Park House every Wednesday 10.30 to 12.30. Recent speakers - First Aid by the Red Cross, Arriva about their various Day Trips and Diabetes by the Leic Diabetes Centre. Join us for a cup of tea, a slice of cake and a nice chat. Contact Jaishri Age UK for more information on 299 2270.

## My Word Poetry Group

Think you couldn't write poetry? Come along and join others who've now discovered they can. We meet at 'Café Blends', Downing Drive, Evington Leicester on Tuesday's 4.00pm to 5.30pm. For more details Tel: 07804 495 527. Fun & Friends in a fine Café!

## Burnaby Gardens Needs New Volunteers!

Are you a keen Gardener? We would like to hear from you.

Burnaby Gardens is situated behind Evington House in Evington Park. The house was built in 1836 by Colonel John Burnaby, he also created the original gardens now maintained by local volunteers. In 2017 these dedicated volunteers won 'Best Establishing Garden' through Britain In Bloom. Details of how you can get involved please contact Mr. Odedra email [baboojiodedra234@hotmail.com](mailto:baboojiodedra234@hotmail.com)



## THE SOCIAL PRESCRIBING PR

Since Learning for the Fourth Age's (L4A's) Social Prescribing project began in November 2016 people aged 50+ in a range of activities and events in Evington. Social Prescribing is a way of linking people with services, providing doctors with a non-medical option that can operate alongside existing treatments. Working with other local partners, our aim has always been to support the health and wellbeing of older people through various opportunities, that are patient led and person centred, offering 'more than medication'. Research shows that social life, delay the onset of dementia, and help us to keep and stay well. We also passionately believe in the value of community life.

Now, as the project nears the end of its funding this October, we wanted to share, in pictures, the activities of our volunteers. Our thanks to all! AB



1. *Make your mark creative community consultation enables children and older people to share their views*
- 2 & 3 *Wellbeing Day at Evington House was an opportunity for older people to try out various activities*
4. *The Fashion Show at Evington Village Hall enabled older people see how well they can look beautiful and feel good.*

There's still time for you to get involved! We are busy planning a week long 'mini- festival' joint to Older Persons' taking place this October from 1st to 5th. From talks, exhibitions, fundraising events and more. Look out for publicity and for more information contact Anita email [Anita.Barrand@l4a.org.uk](mailto:Anita.Barrand@l4a.org.uk) or 0116 273 0728

**CENTRE GARAGE**



**MOT Testing Centre**

Cars, Vans, Motorcycles,  
3 Wheelers & Class 7s  
Service & Repairs

**Mon-Fri & 1/2 Day Sat**

**Tel: 0116 273 0728**

104 Gwendolen Rd., Leicester Near Leicester General Hospital



**PURE LANDSCAPES**

[purelandscapes2018@hotmail.com](mailto:purelandscapes2018@hotmail.com)

Decking, Fencing, Block paving, Patio  
Summer houses, Turfing and much more  
Call us for a free friendly quote  
**DAVID 07392890697**




**EVINGTON COMPUTERS**

**Nicholas Gallo**

PC HARDWARE & SOFTWARE SOLUTIONS  
REPAIRS/UPGRADES - SALES  
INTERNET CONNECTIONS/NETWORKING  
SUPPORT SERVICES  
FREE CONSULTATIONS

PHONE 2201661 32 MARYDENE DRIVE  
07920 790671 EVINGTON, LEICESTER

E-MAIL [NICKGALLO@HOTMAIL.COM](mailto:NICKGALLO@HOTMAIL.COM) 



## PROJECT

, we've had the privilege of working with over eighty older  
making patients with sources of support within the community,  
Working with the Patient group at Downing Drive surgery, and  
people registered at the practice through an innovative programme of high quality learning  
which shows that learning in our later years can boost confidence, give a more positive outlook on  
life that you are never too old to learn and that older people have a valuable contribution to make  
In addition, some of the significant achievements of our wonderful, talented project participants and



people to make their opinions count.  
about new ways to keep well and feel good.  
chosen clothes could make them look



ly celebrating the end of L4A's Social Prescribing project and marking the 'International Day of  
nts and a Movie Matinee in Evington village venues, there'll be something for everyone to enjoy.  
or phone 07964 091693.

**Kneller & Kneller Ltd**  
*For all your electrical requirements*

- Rewires • Extractor Fans • Wall Heaters
- Garden Supplies • Showers • Central Heating
- Wiring • Burglar Alarms • Security Lighting
- TV Points • Telephone Points • Emergency
- Lighting • Wall Lights • Storage Heaters
- Up-Grading electrics to present regulations
- Fire Alarms • Test & Inspections
- Portable Appliance Testing

All work guaranteed and complies to BS7671 Wiring Regulations.  
Contact Kevin for a **FREE** quotation  
T: 0116 2873404 M: 07836 734828  
Email: k.kneller@virginmedia.com  
Domestic - Commercial - Industrial



**EVINGTON EYECARE** OPTOMETRISTS  
45a Downing Drive, Evington, Leicester LE5 6LL  
Phone: 0116 243 3755  
Email: evingtoneyecare@hotmail.co.uk

Optomap and colorimetry tests offered  
NHS and private examinations available

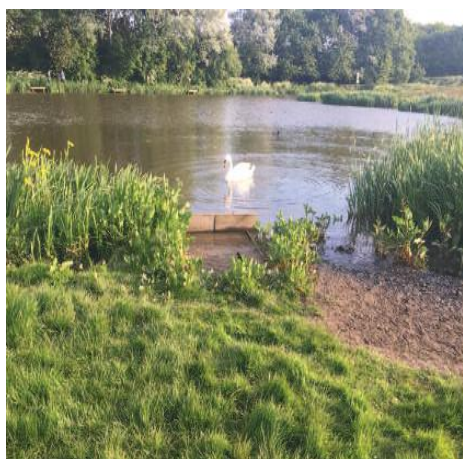
 + 

**Local Man and Van offers a friendly collection, delivery and removal service.**

For a quotation call Nick Hudson  
Telephone: 0116 210 8208  
Mobile: 0774 701 5040



## LATE SUMMER OUTINGS BENNION POOLS



This delightful Nature reserve is just seven miles from Evington and is well worth a visit. It is situated on Bennion Road with access off Redruth Road (LE4 1EX). The secluded site supports a variety of habitats, two sizeable pools with islands,

grassland, plantation woodland, areas of shrubs, hedges and newly planted trees. The carp lake was constructed in the 1960s and provides an ideal nesting environment for coots, moorhens, ducks and swans. The upper pool was constructed in 2004 and is establishing reeds and iris marginal vegetation.

This Leicester City site is looked after by a constituted Friends of group that started out as an angling group. Their meetings provide a chance for members to socialise, but they also organise fundraising and other events. The group work towards the conservation and protection of the site which provides opportunities for local communities and schools to get actively involved in their local nature area. Bennion Pools was originally part of the large medieval deer park. Then following the Norman conquest, it became part of Beaumont Leys Estate. The area changed hands again in the later part of the 17th Century as agricultural land for Beaumont Lodge Farm.

Grass pathways weave their way throughout the site from the picnic area, through grasslands that are planted with wildflower seeds to plantation woodland made of Ash, Alder, Hawthorn and Willow, dense with under storey flora.

Bennion Pools is a delightful green oasis for anglers and visitors alike. See for yourself.

## HEDGEHOGS



Hedgehogs are brilliant for gardens and need all the help they can get at the moment due to their worrying decline. Please re-consider using slug pellets and the like in your gardens as these are incredibly dangerous to hedgehogs. Please also check bonfires before lighting and long grasses, etc. before strimming.

A shallow dish of water and some cat or dog food will be much appreciated by these prickly visitors.

If you see a hedgehog during the day, it needs help. Please contact the local hedgehog rescue.

Increasingly secure gardens are contributing to the decline of hedgehogs. They can roam up to a mile each night and need to move from garden to garden to hunt. Leaving a small space at the bottom of a fence can aid them with this. Perhaps we could even make an Evington village 'Hedgehog Highway' as suggested here: <https://www.hedgehogstreet.org/help-hedgehogs/link-your-garden/>

We feel so incredibly lucky to have hedgehogs visit our garden with so few remaining in the wild and we are very eager to see them thrive in the local area.

# AWARD WINNING MATHS & ENGLISH TUITION

**FREE BOOK!**

## WHAT WILL YOUR CHILD GROW UP TO BE?

Future Leader? Pioneer? Innovator?

TO HELP YOUR CHILD SUCCEED AT SCHOOL

### CALL 0116 348 3290 NOW

CENTRES IN EVINGTON, UPPINGHAM ROAD AND OADBY  
[www.firstclasslearning.co.uk](http://www.firstclasslearning.co.uk) • e: [oadby@firstclasslearning.co.uk](mailto:oadby@firstclasslearning.co.uk)

First Class Learning  
Maths & English Tuition

\*WORTH £4.99 WHEN YOU BOOK A FREE ASSESSMENT

## A & L Landscapes

All garden work undertaken

- Fencing • Patios •
- Decking • Turfing •
- Garden Maintenance •

Winners of  
**Oadby & Wigston in bloom  
 & East Midlands in bloom.**

No job too small  
 Call Andy on  
**07513 568 361**  
 or **0116 241 9214**  
 Call Louise on  
**07704 775 673**



## A NATIONAL CITIZENS SERVICE TEAM AT PILGRIMS HOMES



Young people from National Citizenship Services at Pilgrim Homes

Over the last fortnight Pilgrims Homes in Evington has been a hive of activity as they have hosted a group of young people from National Citizenship Service (NCS).

NCS is a 4 week summer programme that helps young people aged 15-17 to gain confidence and life skills for the future. As part of the process local charities are invited to pitch an idea for the young people to participate in, and each team has to select a charity that they would like to be their social action project which they complete in the final two weeks of the programme. One of the registered managers from Pilgrim Homes came and spoke about the residents during the bid. She invited a team to come to replant some flower beds including more colour for the residents to look at, and also to arrange a picnic in the local park for some residents to attend.

Team 10 was eager to choose Pilgrims Homes for their project. The team selected this charity as they felt a connection between old and young people is very special and would benefit all concerned.

The team worked hard during the first week with planning and fundraising by holding two bake sales of cakes they had made at home. They raised over £200 to buy a lovely array of plants and shrubs which has made a huge difference to the overall result. Coles garden centre staff added a couple more pots, and the team were ready!

The final week was spent in back breaking work with the young people digging and planting the beautiful plants.

Re-doing the garden will be extremely beneficial for the residents in Pilgrims residential and nursing home, which has residents of all abilities, many who have dementia. Bright flowers and plants will make the residents happy and the garden will now be a beautiful haven and more accessible for them.



A picnic in Evington Park

The relationships between the young people and residents grew further when the team took some of the residents to Evington Park for a picnic. The young people had planned a cream tea with drinks and snacks which they served whilst chatting to residents and followed up with some games and card tricks. An event that everyone involved is sure to remember.

This experience has been extremely life changing and all of Team 10 are eager to continue working with Pilgrims in the future, and the residents are eager to have them back.

## SAINT JOSEPH'S CATHOLIC CHURCH.

This quarter Saint Joseph's has had two visits from Bishop Patrick McKinney. On his first visit on the 17th June, he celebrated the 10.30 Mass and four St. Joseph's schoolgirls made their First Holy Communion during the mass. Again on Tuesday 26th June he came to St. Joseph's and celebrated the evening mass, at which twenty-four young people and adults received the Sacrament of Confirmation. Following both of his visits, social occasions - with copious refreshments - were held in the Parish Hall, at which he enjoyed meeting many parishioners. His good sense of humour and conversation endeared him to all and we look forward to his next visit.

On the week-end of 22nd/23rd September, a celebration of the 50th Anniversary of the present Saint Joseph's Church will take place in the Church and the Parish Hall. The church and hall will be open for people to visit for various events and exhibitions.

The organ at the church is unique, being the only new instrument of its status installed locally for over fifty years and Iain, who maintains it, has offered to give recitals on one or both days. The Parish choir and Folk group will be involved and many aspects of the life of the Parish, over the 50 years of the round church, along with earlier years from 1939, will include memorabilia from the parish records.

The old stable block, at the rear of the Parish hall, which was originally given to the Parish, along with adjoining land, by a local farmer, was used by the Church for masses. It is now the Watermead Apostolate dealing with various Charities and housing a store of religious articles, which many visitors may find very interesting.

Bob Cave.

**JAS Auto Care**  
Call us on: 0116 2389 894  
Mob: 07989 080 952

**All makes  
Services & Repaired  
MOT's  
Diagnostics  
Free collection &  
Delivery**

**20% OFF  
1st Full  
Service**

**MOT's  
£40**

**38/40 Main Street, Evington,  
Leicester, LE5 6DN**

**TURN TO US FOR HELP  
AND SUPPORT**

In your time of need we'll take care  
of all the funeral arrangements.  
Call us 24 hours a day.

- Funeral Pre-Payment Plans
- Memorials

**GINNS & GUTTERIDGE**

13 Main Street  
Evington  
LE5 6DN

**0116 273 4684**

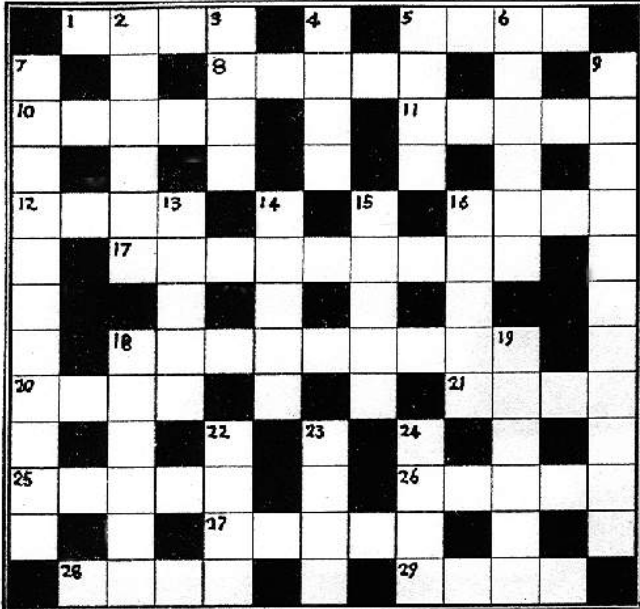
  
Part of Dignity plc. A British Company.



## RALPH TRACEY

We are sad to inform you of the death of Ralph Tracey, an old member of the Evington Echo team.

The Evington Echo started in 1981 and Ralph Tracey joined the team in 1986, taking responsibility for the Artwork until 2001. He continued helping the Echo by writing Crosswords for many subsequent editions. We hope you enjoy this reprint. Thank you Ralph.



### ACROSS

- 1 CRY (4)
- 5 BOORS (4)
- 8 ASSISTED (5)
- 10 VENDETTAS (5)
- 11 WEAR AWAY (5)
- 12 SNAKELIKE FISH (4)
- 16 PARODY (4)
- 17 BLUE PRECIOUS STONES (9)
- 18 BLACKLISTED (9)
- 20 SALVER (4)
- 21 RECORD (4)
- 25 ROWED (5)
- 26 BEGINNING (5)
- 27 FATHER (5)
- 28 EMPLOYS (4)
- 29 VEND (4)

### DOWN

- 2 MATCHES (6)
- 3 OVERTAKE (4)
- 4 LIKELIHOOD (4)
- 5 POEMS (4)
- 6 HERDS (6)
- 7 INSINCERITY (11)
- 9 DIPLOMA (11)
- 13 TYPE OF CABBAGE (5)
- 14 PERIOD (5)
- 15 CLENCHED HANDS (5)
- 16 STITCHED (5)
- 18 SCOTTISH INFANTS (6)
- 19 LORRY FUEL (6)
- 22 TOTALS (4)
- 23 MARRIES (4)
- 24 PLAYTHINGS (4)

Answers on page 15.



## SARAH HALL LEAVES THE LAT PROJECT

This picture shows the final course run in Evington by Sarah Hall, the Leicester Ageing Together (LAT) project manager. This amazing lottery-funded 4-year project is coming to a close. It has worked intensively in six wards in Leicester City to develop courses and other activities that reduce social isolation in the over 50s. Now with a bit more support from LAT, it is up to local communities to take up the challenge and continue to develop what has already been started.

**VINTAGE 186**  
CAFÉ BAR & GIFTSHOP  
AVAILABLE 7 DAYS A WEEK  
FROM 5PM ONWARDS

**FREE VENUE HIRE**

- DINNER PARTIES -
- BIRTHDAYS -
- WAKES -
- ENGAGEMENTS -
- ANNIVERSARIES -
- ANY CELEBRATION -

BESPOKE MENUS FROM SET COURSES TO BUFFET STYLE  
**YOUR OWN PRIVATE CHEF!**  
PLEASE CALL 01162 490 789  
11 MAIN STREET, EVINGTON VILLAGE, LEICESTER LE5 6ON

## A. J. ADKINSON & SON

**Funeral Directors**  
**Family Owned & Run**  
*Established over 100 years*

- Chapels of Rest
- Monumental Work
- Funeral Plan

- Catering
- Pre-Paid
- Ample Parking

**12 London Road, Oadby**  
**Leicester. LE2 5DG**

**Telephone**  
**0116 271 2340**

www.ajadkinsonandson.com

**KEITH DIPROSE TREE SERVICES**  
SCRAPTOFT

**ALL TYPES OF TREE WORK**  
**AND HEDGING UNDERTAKEN**

**STUMP GRINDER AVAILABLE**

**FULLY QUALIFIED AND INSURED**

**LOGS FOR SALE**

**TEL: 0116 241 9084**

**MOBILE: 07840 746627**



## EAST MIDLANDS IN BLOOM VISIT EVINGTON

Monday 9th July was a beautiful warm day and we had the pleasure of the East Midlands in Bloom visit to Evington to judge the beautiful displays and work which has taken place.

Almost 40 local residents came to explore and enjoy each other's company. After a brief presentation by Chris Hossack at the Village Hall, walking shoes came in very useful as we went through St Denys Church to explore Piggy's Hollow where we were introduced to The Reverend Anthony Lees-Smith, vicar of St. Denys Church. We walked through Evington Village visiting the Village Green, The Evington War Memorial, the Co-op Gardens, Evington Park and finally Burnaby Gardens to view the new planting there. We then arrived at Graceworks to see their permaculture gardens.

At Graceworks the guests were treated to authentic stone baked pizzas freshly prepared by Tom Johnson and Vinay Patel, using locally grown ingredients from the garden. Guests were also treated to a wonderful buffet prepared by Ruth Telford-Brown, Santok Odedra and Vinay Patel. It was a wonderful atmosphere. I



was speaking to local resident Howard of Linden Drive, who is a keen gardener and he was totally amazed by the aquaponic system.

Diana Courtney also found the Graceworks Community Garden and Burnaby Gardens wonderful and totally amazed with the work that had taken place. The Community gardens formed in 2013 and aims to create a sanctuary that would create a sustainable, resilient and beautiful garden, which helps people connect with the land – a great place to visit.

Kally Korotana

## THE CO-OP ACQUISITION OF NISA IS BEARING FRUIT



Richard and Lyn Kent, proprietors of Nisa on Main Street, Evington say that there will now be 250 new Co-op own brand lines and by November there will be 800 lines. These will include chilled and fresh food and vegetables, frozen food, wine and ambient lines, i.e. soft drinks, tinned foods and other grocery lines.

Richard and Lyn are able to pick and choose the lines they stock in response to customers' demands. The prices will be competitive and they will get deliveries three times a week.

On line orders: owlgetit.co.uk.

**Curtains, Blinds and accessories**

Traditional or Contemporary Style  
**Wide Range of fabrics**

Very competitive on price

Discuss your requirements & for a free quotation:  
0116 296 1032  
www.fscurtains.com  
enquiries@fscurtains.com

**F&S CURTAINS**  
SOFT FURNISHING

**OPENING TIMES**  
Mon - Sat 6am - 10pm  
Sun 7am - 10pm

**Nisalocal**  
Main Street, Evington Village  
0116 273 8616

**UNDER NEW MANAGEMENT  
NEW LOOK STORE**  
ORDER ONLINE: OWLGETIT.CO.UK

Serving Evington Village with Fresh Produce  
Brucciani Fresh Bread, Cobs, Fresh cream cakes delivered daily.  
Fresh Italian bread and cobs delivered 4 days a week from Secchi (Nottingham)  
Leicester's finest filled cobs made with Brucciani cobs from only £1.90.  
Fresh bedding plants and flowers | All fresh and cooked meats, pies, faggots and sausage rolls from Leicester's most prestigious butcher, Joseph Morris. | Our fantastic beer and wine range at promotion prices. | Tobacco, Confectionery and Groceries

Coming soon: Vape station and an offer for 2 litres of milk and any co-op bread for £1.65.

**co op**

**EXPRESS GLAZING**  
91 Wintersdale Road, Leicester LE5 2GS

**YOUR LOCAL WINDOW REPLACEMENT SPECIALIST**  
competitive prices

FOR...  
CONSERVATORIES  
PORCHES  
REPLACEMENT WINDOWS AND DOORS

INSURANCE WORK & REPAIRS UNDERTAKEN  
IMMEDIATE RESPONSE

Individually designed to suit your home

Telephone:  
Rick Gardner on  
(0116) 243 3201

**G.B. SERVICES**  
Good, Reliable, Local General Handyman  
No job too small - Competitive Rates

**GENERAL /HANDYMAN WORK:**  
Indoor/outdoor decorating, Fence painting,  
Leaf clearing/pruning/garden tidying,  
Loft Clearing/Odd Jobs & Dog Walking.

**EXTERNAL CLEANING:**  
Conservatories, Fascias/Soffits,  
Gutterings, Windows and Snow Clearing.

**JET WASHING:**  
Driveways, Paths & Patios.

Call Gavin on:  
0116 2416691  
Email: gavinbroadhurst@hotmail.com



## CLUBS, SOCIETIES, CLASSES AND EVENTS

### AT EVINGTON VILLAGE HALL LE5 6FA

Bookings at the Village Hall. Tel: 273 7364.

### EVINGTON GARDEN CLUB

Indoor meetings are held from 7.15pm until 9.00pm on the third Tuesday of the month in the Village Hall. Visitors £2. Tel: 273 5487.

18th Sept. 'A Year in My Garden.' An illustrated talk by Linda Robinson.

16th Oct. Demonstration and workshop on the Propagation of plants by Angela Holland.

### LEICESTERSHIRE CALLIGRAPHERS

We meet monthly, usually on the third Saturday afternoon, to practise the art of beautiful writing. Non-members are welcome for a fee of £3.50 per meeting. Tel: 285 6436 or email: leiscalligraphers@gmail.com

### BABY SENSORY

Wednesdays 9.00am - 1.30pm. Contact Anna Chaggar on 07813203048.

### SILVER SWANS BALLET FOR OVER 50S

Thursdays 11.00am - 12.00noon. Contact Vanessa Burzynski on 07765407323.

### MINI PROFESSORS

Fridays 11.00am - 1.00pm. Contact Deepti Gumber on 07709343045.

### AT EVINGTON PARK HOUSE LE5 6DE

### ANYTHING GOES SOCIAL GROUP

LAT group Weds. 10.30am - 12.30pm.

**BILAL YOGA** For happiness and good health with Kausar Bux. Calming exercises and controlled breathing for people of all ages. Work at your own pace. Beginners welcome. Wednesday 2.00 - 3.00pm. £1 a session.

### THURSDAY YOGA GROUP

Thursdays 10.30am - 11.30am. £1 a session. This is a led session.

### CROCHET FOR ALL

Tuesdays 10.00am to 11.30am. Learn to crochet with Abdul Bux. (See article on page 3)

### IN EVINGTON PARK

### EVINGTON BICYCLE CLUB

This popular club is aimed at encouraging people to learn how to ride a bicycle. Come along, no booking necessary. Sundays 3.00 - 5.00pm Cycle within Evington Park. Tel: 220 4 525.

### MINDFULNESS SESSION

Thursday 20th Sept. 10.00am - 11.00am (See article on page 3)

### AT EVINGTON LIBRARY EVINGTON SCRIBBLERS

Evington Scribblers meet fortnightly in Evington library on Thursdays from 10.30am to write poems, stories and articles. New members are welcome and friendly feedback given. Enquire at library for dates of meetings.

### EVINGTON PHILOSOPHY CLUB

Meet fortnightly at the same time as the Scribblers Club. Enquire at library for dates of meetings.

**EVINGTON TODDLERS GROUP** Tuesdays from 10.00am - 12.00noon.

### READING BUDDIES

Every Saturday 11.00am - 1.00pm. A fun, free activity to help children aged 5-11 years with their reading. Operated on a first come first served basis.

**EXHIBITIONS IN THE LIBRARY** (See article about Mary Powell on page 6.)

### AT ST CHAD'S CHURCH AND PARISH HALL, COLEMAN ROAD

### ASIAN LUNCH CLUB

Wednesdays 11.00am to 2.00pm. Contact Suresh on 07801101308. Lifts may be available.

### AT EVINGTON YOUTH CLUB

The Common (the road by the Library).

### YOUTH CLUB

Fridays for 8-14 yrs, 6.30 - 8.30pm.  
Wednesdays Girls' night 5.30 - 7.30pm.  
Tel: 273 5542 or 235 1572.

### WHY NOT COME ALONG TO BINGO AT EVINGTON YOUTH CLUB?

for a game of Bingo, a cuppa and a chat. Everyone welcome. Eyes down. Monday evening 7.45 - 9.15pm Maureen and Bill. Tel: 273 5542.

### AT THE PARISH CENTRE (CHURCH ROAD) EVINGTON LOCAL HISTORY AND HERITAGE GROUP MEETINGS

Meetings held from 7.00 - 9.00pm on the second Thursday in the month at St. Denys Parish Centre. Contact Chris Hossack on 241 5153, chris\_hossack@yahoo.co.uk

13th September Lives in Service. The history of domestic service in Leicestershire mainly 19th Century through to the inter-war period. This covers different types of servants, their duties, conditions of work, how they were recruited and why their numbers declined. Speaker: Cynthia Brown.

11th October. Metal Detecting in Leicestershire. Dr. Phil Harding will be showing some of his many finds.

### MONDAY MEETS

1st and 3rd Mondays every month. 2.00 - 4.00pm in the Parish Centre. For anyone who would like some company, is feeling lonely or going through bereavement. Enjoy some time in which to relax. Next meetings are on 3rd September., 17th September, 1st October and 15th October.

### AT ST DENYS CHURCH

**EVINGTON MOTHERS' UNION** meets in the Parish Centre on the 3rd Tuesday of each month at 2.30 - 4.30pm. All welcome. Next meetings on 18th September and 16th October.

### MEN'S FORUM COFFEE FELLOWSHIP

10.30am - 12.00noon All welcome. Next meetings Tuesdays: 18th September and 16th October.

**ST DENYS LADIES GROUP** Tuesdays monthly. 7.30pm. Next meetings: 11th September and 9th October.

### ST DENYS LADIES GROUP COFFEE MORNING

Sat. 15th September 10.00am - 12noon. All welcome.

### HARVEST FESTIVAL AT ST DENYS

Sun. 7th Oct. 10.00am - 12noon. Special worship for All. Everyone welcome.

### AT ST JOSEPH'S CHURCH

stjoseph-leicester.btck.co.uk

### ST. JOSEPH'S TABLE

10.30am to 3.30pm every Tuesday and Wednesday. Hot and cold food available in the Parish Centre: light bites and home bakes, jacket potatoes, salads, cream teas and more.

### AT CHURCH OF GOD, DOWNING DRIVE

**CHARITY COFFEE & CHAT** Meets 10.30am till 12.00 noon every Friday morning at The Church of God on Downing Drive. Come and relax with friends and neighbours and support good causes.

### NHS DOWNING DRIVE SURGERY COFFEE MORNINGS

Meets Monday mornings 10.15am - 12.00 noon. Church of God, Downing Drive.

### AT GOODWOOD EVANGELICAL CHURCH, GAMEL ROAD

### MESSY CHURCH

For further details contact Stephen on 079 0294 6004.

**THE ARK TODDLER GROUP** for 0 - 4 years and carers. Goodwood Evangelical Church, Gamel



*"We preach not ourselves,  
but Christ Jesus the Lord"*

## EVINGTON CHAPEL

(Baptist)

**Welcome to our meetings**

**Sunday : 11am and 6pm**

**Wednesday : 7.30pm**

Other meetings as announced

[www.evingtonchapel.org.uk](http://www.evingtonchapel.org.uk)

For further information contact: 0116 2412087

**BHANGRA BLAZE**  
The ultimate bhangra workout  
**Reach your Goals & have Fun**  
Starting 28th August every Tuesday 6pm - 7pm  
AT EVINGTON VILLAGE HALL  
Church Road, Evington, Leics, LE5 6FA  
For more Info CONTACT PREET  
on 07525 153284



Road. Wednesday in term time. 9.30 – 11.30am. £1 family per session. For further details contact Stephen on 079 0294 6004.

### AT GRACEWORKS (WYCLIFFE UNITED REFORMED CHURCH, THE COMMON)

(Between the Library and Linden Primary School.) A Place of Welcome. Every Tuesday 12.30 - 2.30pm. Open for everyone. Come along for friendship and hospitality, a free lunch of soup and bread, someone who will listen and chat, children's area/breast-feeding friendly. You will be made most welcome.

### YOUTH GROUPS AT OTHER LOCATIONS

#### SCOUT GROUPS

##### 19TH LEICESTER, DAVENPORT ROAD

E-mail: enquiries@evingtonscouts.org.uk  
Website: www.evingtonscouts.org.uk Tel: Howard Sloan on 220 9017.

##### 9TH LEICESTER, STOUGHTON ROAD

Tel: Pauline Burton on 273 6411.

##### 24TH LEICESTER (ST. PHILIP'S AIR SCOUTS)

Evington Drive. Tel: Peter Hardy on 276 0457.

**HAMILTON AIR CADETS** Hamilton Community College, Keyham Lane, LE5 1RT. For 13 - 17 yrs. Monday/Thursdays 7.00 - 9.30pm. Tel: 07968 159844 -Email JoinUs@2502SqnATC.com Website: www.2502atc.com

#### NEPTUNE SWIMMING CLUB

Evington Pool. Tel: Evington Leisure Centre 299 5575.

### OTHER EVENTS

#### DOWNING DRIVE FRIENDS AND NEIGHBOURS

Litter Picking Sessions. Meet at 10.00am at Cafe Blends on last Thursday of month. Next sessions are on Thursday 27th September and Thursday 25th October.

### Learning for the Fourth Age CELEBRATION FESTIVAL

1st - 5th October 2018

Inspired by participants aged 50+ involved on L4A's

#### SOCIAL PRESCRIBING PROJECT

*From talks, exhibitions, fundraising events and a Movie Matinee in Evington village the'll be something for everyone to enjoy!*

Look out for publicity or for more information Contact Anita on 07964 091693.

## EVINGTON VILLAGE FETE AND SHOW 2018



Did you manage to get to the Fete? And did you see the Show with over 300 entries? It was a fantastic day with lovely sunshine and not too hot for a change. There was so much going on with Lutterworth

Town Band, Bakanalia Border Morris Dancers, Have a Go Circus, bouncy castle, Punch & Judy, Owls (such big eyes) Blood Bikes, vintage Leicester City Buses offering a round trip to the tram shed, exhibitions in the chapel, the launch of the 800th anniversary celebrations of St Denys with music and singing in the church. Not to mention the many and varied stalls selling everything from cards to plants, the hundreds of books on sale, the tea and cake in the Parish Centre and the ever-popular refreshments in the village hall and of course ice cream by the cone load.

There is only space here to just mention some of the highlights and a proper report will appear in our next issue, but we do hope you came and that you enjoyed the day. If there are attractions that you would like to see again or new ones for next year or if you have any comments to make please email us at evingtonvillagefete@gmail.com. We would be delighted to hear from you.

Richard Webb

#### CONTACTING POLITICIANS

*For information about meeting the politicians in Evington ward, North Evington ward and Stoneygate ward tel: 454 6360.*

*For MP Keith Vaz tel: 266 8008.*

*For MP Jon Ashworth tel: 262 7297.*

#### CROSSWORD ANSWERS

Across

1. WEEP, 5. OAFS, 8. AIDED 10. FEUDS, 11. ERODE, 12. EELS, 16. SKIT, 17. SAPPHIRES, 18. BOYCOTTED, 20. TRAY, 21. DISC, 25. OARED, 26. ONSET, 27. DADDY, 28. USES, 29. SELL.

Down

2. EQUALS, 3. PASS, 4. ODDS, 5. ODES, 6. FLOCKS, 7. AFFECTATION, 9. CERTIFICATE, 13. SAVOY, 14. EPOCH, 15. FISTS, 16. SEWED, 18. BAIRNS, 19. DIESEL, 22. ADDS, 23. WEDS, 24. TOYS.

### SMALL ADS

Trade and professional rate £2.50 for up to 25 words. All other rates. 50p for maximum of 25 words including telephone number, except for adverts selling items over £1,000, which will cost £5 for a maximum of 25 words. Please write clearly and leave your ad., with payment, in an envelope marked Small Ads at Bennett's Home and Garden Supplies, 30 Main Street.

#### DON'T MOAN ABOUT MOWING

Contact:- J.B. GARDEN SERVICES

Large & Small Lawns & Other Gardening Jobs. Tel: 259 3336 MOBILE 0780 125 9687.

#### FOR SALE - BATHROOM CABINET

New (boxed) Stainless Steel bathroom cabinet 550(h) x 300(w) 140(d). Single door. Ready assembled. Internal fixed shelf £35. Call Nilesh 07851488810.

#### FOR SALE - SHOES AND BOOTS

All size 9. Hardly worn. Tel: 077 650 204 29.

#### FOR SALE - STONEYGATE AREA

2-bed apartment. 55 year lease remains. Will accept reasonable offer. Tel: 077 650 204 29.

#### WANTED - DOMESTIC CLEANER

Require a reliable and efficient person fortnightly. Highway Road vicinity. Tel: 273 6380.

#### FOR SALE - LEAF BLOWER VAC.

'Ponerbase' 2400w with collection bag. As new £20. Tel: 2412043.

FOR SALE - Garage equipment. Heavy duty. Industrial offers 07929518563. Mike.

#### BAHA'I MONTHLY GATHERINGS

With inspirational readings and music. "The earth is but one country and mankind its citizens." Baha'u'llah. For further information Tel: 241 5323.

FOR SALE - HENSELITE BOWLS SUPERGRIP. Size 5 with carrying bag. £40. Tel: 243 3179.

#### FOR SALE - ALBERTA FRAME TENT 7' x 13'.

Airbed, sleeping bags, cooker, complete outfit. Everything there. £150. Tel: 243 3179.

#### MATHS PERSONAL TUTOR AVAILABLE

I am a qualified, experienced and friendly teacher of Maths based in Thurnby and fully DBS cleared. I specialise in Years 7 to 11 (Key Stages 3 and 4). To discuss your requirements further please contact me on 0770427 9585.

**J. & A. PHARMACY**

19/21 Main Street Evington  
Tel: 273 6047 \*No early closing

- Comprehensive range of Toiletries and Hair Colours
- Comprehensive range of cards
- Knitting wool, patterns and haberdashery
- Collection and delivery service if required
- Opening Hours: Mon - Fri: 9 - 6 Sat: 9-1

**EVINGTON BUILDING SERVICES**

Extensions, Alterations, Bathrooms, Kitchens, Wall & Floor Tiling, Block Paving, Stone Work, Slabbing & Fencing

**FREE ESTIMATES**  
**ASK FOR MICHAEL**  
TEL: 0116 241 9450  
MOBILE: 07802 468880



## CITY MOWER SERVICES



### Briggs & Stratton engine repairs

Mountfield, Hayter, Honda Qualcast etc.

Used Mowers & parts bought & sold  
Shears sharpened

Unit 5, 57a Gwendolen Road, Leics LE5 5FL

**0116 273 4027**

## LEGARD'S

ELECTRICAL & PLUMBING SERVICES

Security Lights Bathrooms  
Extra Points Showers  
Rewires Extra Rads

Free estimates All work guaranteed

A complete service on your doorstep

Telephone: (0116) 240 3269 or (0116) 281 3283

## An Independent Life



Offers a wide range of services to help you and your loved ones to continue to enjoy the comforts and familiarity of home.

### Our services include:

Personal care  
Cleaning services  
PEG-feeding  
Stoma care  
Dementia care  
Disability support  
End of life  
Respite care  
Handyman  
Gardening

To find out more, call us for a chat on **07448 607238** or email [anindependentlife4me@gmail.com](mailto:anindependentlife4me@gmail.com)

## MAIS

HOME IMPROVEMENTS

Est 1999

*You Aspire We Build*

- Honest & Reliable Service
- Free Estimates
- High Quality Workmanship



Building Work • Bathrooms  
Kitchens • Plastering  
Plumbing • Electrics  
Floor & Wall Tiling

City & Guilds

**07944 213 496**

## A. K. DAVIS

All building work Carpentry & Joinery undertaken  
30 years experience  
High quality workmanship  
Very reliable

26 Downing Drive, Evington

Tel: 0116 241 7677

Mob: 07711 768 078

bpec APPROVED

## Robert Johns

Plumbing & Heating Services

*For all Your Plumbing & Heating Requirements*

A fully qualified and Gas Safe Registered tradesman. Experienced in both domestic & commercial work.

- Full Central Heating Systems
- Boiler & Radiator Changes
- 5yr Guarantee, Parts & Labour on selected Boilers
- Ground Source Heat Pumps
- System Power Flush
- Boiler & Gas Fire Services
- Gas Landlord Certificates
- Bathroom & Showers
- Alterations
- Outside Taps
- Solar Hot Water Systems

For a free estimate call **0116 241 8758**

[www.robertjohnsplumbingandheating.co.uk](http://www.robertjohnsplumbingandheating.co.uk)

81 Pulford Drive, Thurnby, Leicester



## The Dove Pub & Dining

Downing Drive, Leicester LE5 6LH 0116 241 9037

Open 11.30am - 11pm 7 days a week



Your favourite local has a shiny new look, plus a fantastic new menu with mouth-watering new dishes.

Come & have a look & see for yourself.

Food available daily 12 noon - 9.30pm

Extended drinks menu &

Locally sourced dishes

### Sunday Lunches

Choice of 5 meats with all fresh vegetables and homemade trimmings  
From £ 9.95

### Thursday Quiz night

Wednesday - Pie nights  
£9.95 with pint of beer/drink  
Homemade shortcrust pastry and pies with 5 different fillings and a choice of vegetables and potatoes.

Fridays  
2 for 1 on cocktails  
50% prosecco



Friday - Fish nights  
Quality of fresh fish specials.  
Free glass of wine with every fish dish.

Live sports and regular live entertainment in the bar

Visit our website for our full menu and prices [www.doveevington.co.uk](http://www.doveevington.co.uk)

## BENNETT'S

HARDWARE • GARDEN SUPPLIES • DIY

OPEN MONDAY-FRIDAY 8.30-5.30 SATURDAY 8.30-5.00

### L.E.D. Light bulbs



Low Prices and a Wide Choice

WARM WHITE • COOL WHITE  
DAYLIGHT

Hundreds of traditional bulbs  
35 types of fluorescent tubes

30 Main Street Evington Village

OPPOSITE THE CEDARS PUB Tel: 273 7116